



TAYLOR PITTSBURGH MFG., INC

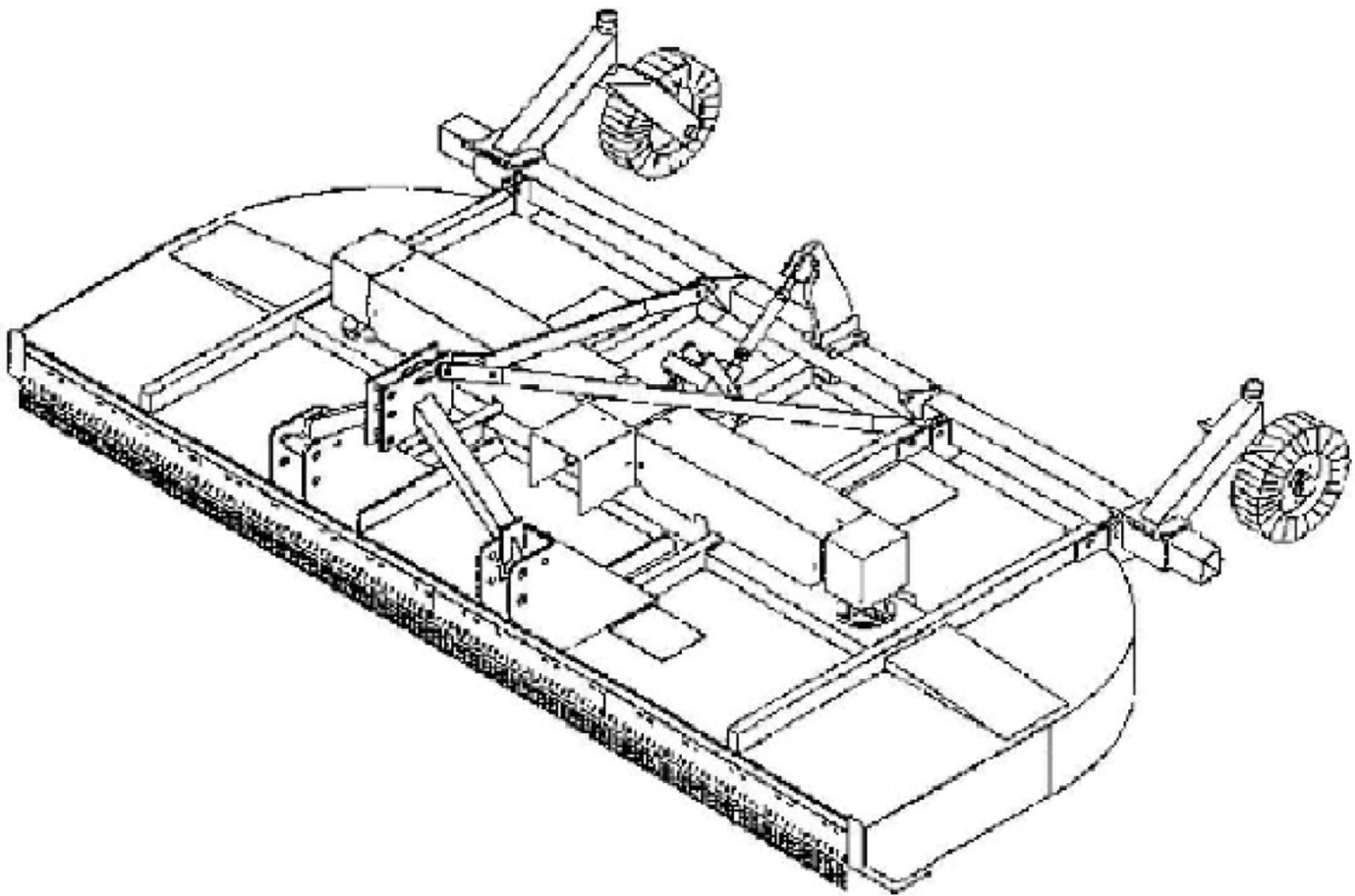
PO BOX 1200

WINFIELD, AL 35594

205-487-3202

# 270 SERIES

# 10-FT ROTARY CUTTER



**OWNER'S MANUAL**

**SERIES 270/120**

**OCT 2023**



# SAFETY RULES



**ATTENTION! BECOME ALERT! YOUR SAFETY IS INVOLVED!**



## SAFETY ALERT SYMBOL

**FIG. 1:** This is the safety alert symbol. It means **ATTENTION! BECOME ALERT! YOUR SAFETY IS INVOLVED!** Look for it, both in this manual and on safety decals on the equipment. It will direct your attention to information that involves your safety and the safety of others.



FIGURE 1

## SIGNAL WORDS:

**FIG. 2:** The words **DANGER**, **WARNING** and **CAUTION** are used with the safety alert symbol. Learn to recognize these safety alerts and follow the recommended precautions and safe practices.



FIGURE 2



**DANGER:** The safety alert symbol, with the word **DANGER**, indicates an immediate hazardous situation that, if not avoided, could result in serious injury or death.



**WARNING:** The safety alert symbol, with the word **WARNING** indicates a potentially hazardous situation that, if not avoided, could result in serious injury or death.



**CAUTION:** The safety alert symbol, with the word **CAUTION** indicates a potentially hazardous situation that, if not avoided, may result in minor or moderate injury.

Replace any **DANGER**, **WARNING**, **CAUTION** or instructional decal that is not readable or is missing. The location and part number of these decals is identified later in the section of the manual.

**IMPORTANT:** The word **IMPORTANT** is used to identify special instructions or procedures which, if not strictly observed could result in damage to, or destruction of the machine, process or its surroundings.

## 270 TABLE OF CONTENTS

ITEM	PAGE
Safety Alert.....	2
General Information.....	2
Specifications.....	4
Safety Rules.....	5-7
Bolt Torque Chart.....	7
Safety Decal's Locations .....	8
Safety Decal's.....	8
Introduction.....	9
Assembly .....	9-12
Before Operation .....	12
Attaching .....	12
Operation.....	13
Transporting .....	14
Maintenance .....	15
Storage & Miscellaneous Hardware .....	16
Figure 4– 10' Pull Type Components .....	17
Figure 5– 10' Lift Type Components.....	18
Figure 6– 10' Shields, Gearboxes & Stump jumpers.....	19
Figure 7– Shield Components (All Models).....	20
Figure 8– 11 Wheel Components .....	21-24
Figure 12– Field Installed Skid Shoe (All Models).....	25
Figure 13– Hydraulic Components .....	25
Figure 14– Hydraulic Cylinder Components.....	26
Figure 15– 16 Gearbox Components (All Models) .....	27-30
Driveline Components (All Models) .....	31-34
Slip Clutch Components (All Models) .....	34-35
Connector Shaft .....	36
Warranty .....	37-39

# CUTTER SPECIFICATIONS

## 10 FOOT LIFT & PULL TYPE

CUTTING HEIGHT RANGE	2" TO 11"
CUTTING WIDTH (INCHES)	120"
OVERALL WIDTH (INCHES)	124-1/2"
OVERALL LENGTH (INCHES)	102-1/2"
GEARBOX RATING (HP)	90 (HP) OUTBOARD 125 (HP) SPLITTER
TRACTOR PTO	540 RPM
TRACTOR (HP)	50-80
DRIVELINE SIZE	CAT 6
DRIVELINE PROTECTION	SLIPCLUTCH
NUMBER OF BLADES	6
BLADE SIZE	1/2" X 4"
BLADE OVERLAP (INCHES)	6
BLADE TIP SPEED (Feet Per Minute)	16,233 FPM
BRUSH DIAMETER CUT	UP TO 2"
CUTTER FRAME THICKNESS DECK	7 GAUGE
SIDE FRAME	1/4"
SIDE FRAME DEPTH (INCHES)	10"
TAILWHEELS	
LIFT TYPE	LAMINATED
PULL TYPE	LAMINATED OR AIRCRAFT
3 POINT HITCH CATEGORY	CAT II OR CAT III
WEIGHT W/O SHIELDS (LBS)	
LIFT TYPE	2,256 LBS.
PULL TYPE W/O CYLINDER	2,550 LBS.



# SAFETY RULES



**ATTENTION! BECOME ALERT! YOUR SAFETY IS INVOLVED!**

Safety is a primary concern in the design and manufacture of our products. Unfortunately, our efforts to provide safe equipment can be wiped out by a single careless act of an operator.

In addition to the design and configuration of equipment, hazard control and accident prevention are dependent upon the awareness, concern, prudence and proper training of personnel involved in the operation, transport, maintenance and storage of equipment.

It has been said “**The best safety device is an informed, careful operator.**” We ask you to be that kind of an operator.

## TRAINING

- Safety instructions are important! Read this manual and the tractor manual; follow all safety rules and safety decal information. (Replacement manuals are available from dealer or call 1-800-228.2308.) Failure to follow instructions or safety rules can result in serious injury or death.
- If you do not understand any part of this manual and need assistance, see your dealer.
- Know your controls and how to stop engine and cutter quickly in an emergency.
- Operators must be instructed in and be capable of the safe operation of the equipment, it's attachments and all controls., Do not allow anyone to operate this equipment without proper instructions.
- Do not allow children or untrained persons to operate equipment.

## PREPERATION

- Always wear close fitting clothing, and personal protection equipment called for by the job conditions. These items may include a hard hat, safety glasses, goggles or face shield, hearing protection and safety boots. DO NOT wear loose clothing, jewelry or and other items that may be entangled in moving parts.
- Ensure cutter is properly mounted, adjusted and in good operating condition.
- Tighten all nuts and bolts, and check that all cotter pins are installed securely to ensure equipment is properly assembled before operating.
- Make sure spring-activated locking pin or collar slide freely and is seated firmly in tractor PTO spline groove.
- Tractor must be equipped with ROPS FRAME or ROPS CAB and seat belt. Keep seat belt securely fastened. Falling off tractor can result in death from being run over or crushed. Keep foldable ROPS system in “locked up” position at all times.
- Remove accumulated debris from the cutter, tractor and engine to avoid fire hazard.
- Ensure all safety decals are installed. Replace if damaged. (See safety decal section for location.)
- Inspect chain/rubber shielding before each use. Replace if damaged.
- Ensure shields and guards are properly installed and in good condition. Replace if damaged.



# SAFETY RULES

**ATTENTION! BECOME ALERT! YOUR SAFETY IS INVOLVED!**



(Safety Rules continued from previous page)

- A minimum 20% of the combined tractor and cutter weight must be on front wheels with cutter in transport position. Without this weight, tractor could tip over causing personal injury or death. See your tractors operators manual for information regarding adding weights.
- Inspect and clear area of stones, branches or other hard objects that might be thrown, causing injury or damage.
- area is clear before operating in reverse.
- Do not operate on steep slopes.
- Do not stop, start, or change directions suddenly on slopes.
- Use extreme care and reduce ground speed on slopes and rough terrain.
- Watch for hidden hazards on the terrain during operation.
- Stop tractor and implement immediately upon striking an obstruction. Turn off engine, remove key, inspect and repair any damage before resuming operation.

## OPERATIONAL SAFETY

- Keep bystanders away from cutter while it is in operation.
- Never direct discharge at anyone.
- Operate only in daylight or good artificial light. Always comply with all state and local lighting and marking requirements.
- Do not allow other people in the area when operating, attaching, removing, assembling or servicing cutter.
- Make certain all movement of cutter components has stopped before opening blade access cover.
- No riders are allowed on equipment.
- Always sit in tractor seat with seat belt fastened when operating controls or starting engine. Place transmission in park or neutral, engage brake and ensure all other controls are disengaged before starting tractor engine.
- Operate tractor PTO at 540 rpm. Do not exceed.
- Do not operate tractor PTO during transport.
- Look down and to the rear and make sure
- When performing any service or maintenance, disengage power to cutter. Lower all raised components to the ground. Operate valve levers to release any hydraulic pressure. Stop engine, set parking brake and remove key before dismounting tractor.
- Before performing any services or maintenance, disconnect driveline from tractor.
- Before working underneath, raise cutter to highest position, install transport locks, and block securely. Blocking up prevents cutter dropping from hydraulic leak down, hydraulic system failures, or mechanical component failures.
- Keep all persons away from operator control area while performing adjustments, service or maintenance.
- Frequently check blades. They should be sharp, free of nicks and cracks and securely fastened.

## MAINTENANCE SAFETY



# SAFETY RULES



**ATTENTION! BECOME ALERT! YOUR SAFETY IS INVOLVED!**

(Safety Rules continued from previous page)

- Do not handle blades with bare hands. Careless or improper handling may result in serious injury.
- Your dealer can supply genuine replacement cutter blades. Substitute blades may not meet original equipment specifications.

## STORAGE

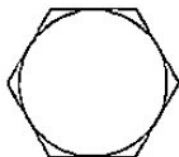
- Block cutter securely for storage.
- Keep playing children and bystanders away from storage area.
- Store on a level surface sheltered from the weather.

## TRANSPORTING SAFETY

- Use a Slow-Moving-Vehicle (SMV) emblem and proper lighting when transporting the cutter.
- Do not transport the cutter over 20 MPH (30 KPH) on the best surface conditions. Reduce speed when going up or down hills and when approaching ditches or corners.
- Do not operate tractor PTO during transport.
- Always comply with all state and local lighting and marking requirements.

## BOLT TORQUE CHART

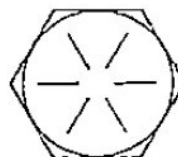
GRADE 2



GRADE 5



GRADE 8



## TORQUE IN FOOT POUNDS (NEWTON METERS)

BOLT SIZE		3/8	1/2	5/8	3/4	7/8	1
HEX HEAD		9/16	3/4	15/16	1-1/8	1-5/16	1-1/2
GRADE	2	18 (24.4)	45 (61.0)	89 (120.7)	160 (216.9)	252 (341.6)	320 (433.9)
	5	30 (40.6)	68 (92.2)	140 (189.8)	240 (325.4)	360 (488.1)	544 (737.5)
	8	40 (54.2)	100 (135.6)	196 (265.7)	340 (460.9)	528 (715.1)	792 (1073.8)



## SAFETY DECALS



**ATTENTION! BECOME ALERT! YOUR SAFETY IS INVOLVED!**



**REPLACE IMMEDIATELY IF DAMAGED!**



### CAUTION

READ YOUR OWNERS MANUAL  
USE SAFE OPERATING PRACTICES  
MAX. TRANSPORT SPEED - 20 MPH



### WARNING

PTO SPEEDS HIGHER THAN 540  
RPM CAN CAUSE EQUIPMENT  
FAILURE AND PERSONAL INJURY  
OPERATE PTO AT  
**540 RPM.**



### DANGER



### ROTATING BLADES AND THROWN OBJECTS

- KEEP AWAY
- DO NOT OPERATE IN VICINITY OF OTHER PERSONS
- CLEAR MOWING AREA OF DEBRIS
- PULL CHAINS OR RUBBER SHIELDS MUST BE USED TO COMPLY WITH OSHA AGRICULTURAL STANDARD 1928.57, SAE J232 AND ANSI 37.44 UNLESS IT INTERFERES SUBSTANTIALLY WITH MOWER FUNCTION DURING AGRICULTURAL USE IF NOT FULLY SHIELDED. STOP OPERATION WHEN ANYONE COMES WITHIN SEVERAL HUNDRED FEET.

BLADES CONTACT OR THROWN OBJECTS CAN  
CAUSE SERIOUS INJURY OR DEATH.



### WARNING

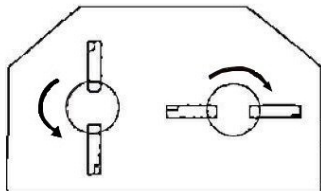
#### TO AVOID SERIOUS INJURY OR DEATH

READ OPERATIONS MANUAL  
(AVAILABLE FROM DEALER) AND  
FOLLOW ALL SAFETY PRECAUTIONS  
KEEP ALL SHIELDS IN PLACE AND  
IN GOOD CONDITION  
OPERATE MOWER FROM TRACTOR  
SEAT ONLY  
LOWER MOWER STOP ENGINE  
REMOVE KEY BEFORE DISMOUNTING  
TRACTOR  
ALLOW NO CHILDREN OR UNTRAINED  
PERSONS TO OPERATE EQUIPMENT  
FAILURE TO OPERATE SAFELY CAN  
RESULT IN INJURY OR DEATH



### WARNING

TO PREVENT BLADE INTERFERENCE  
ROTARY CUTTER COMPONENTS MUST BE  
ASSEMBLED (TIMED) TO POSITION BLADE AT  
90° TO EACH OTHER (PER DRAWING) TO AVOID  
BODILY INJURY OR SEVERE MACHINE DAMAGE.



### WARNING

LOOK & LISTEN FOR ROTATION  
DO NOT OPEN BLADE ACCESS  
COVER UNTIL ALL COMPONENTS  
HAVE STOPPED

## **INTRODUCTION**

This manual covers the assembly, operation, and maintenance of your Series 270 Rotary Cutters. Studying and obeying these instructions will ensure optimum product performance and longevity. Be sure to read all instructions carefully. Read all safety precautions prior to operation.

Maintain your implement with original repair parts to ensure safety and optimum performance.

### **MODIFICATIONS**

It is the policy of the manufacturer to improve its products whenever possible and practical. We reserve the right to make changes, improvements, and modifications at any time without incurring the obligation to make such changes, improvements, and modifications on any cutter sold previously.

## **ASSEMBLY**

### **General**

Your Series 270 Rotary Cutter is shipped in bundles for assembly. Remove all wiring from bundles for assembly. Remove all wiring from bundles as they are called for. Choose a level area to arrange the parts conveniently. Assemble parts for each step loosely to ensure fit. Use flat washers with slotted holes. Always use lock washers unless a lock nut is called for. Tighten hardware after parts are installed according to the torque chart given. Unless otherwise stated, all hardware is Grade 5. The following assembly steps are given to minimize the need for adjustment after assembly. Remember **Left and Right** are determined by standing at the rear of the cutter and facing it.



### **WARNING**

The manufacturer strongly recommends installation of deflector shields. A rotary cutter without deflector shields can discharge large objects at high speeds which could seriously injure bystanders or the operator. Check local laws governing the operation of equipment without shields.

### **10' PULL TYPE CUTTER**

#### **(Drawbar) Refer to Fig. 1**

- 1) Block cutter deck approximately 10" off the ground before starting the assembly procedures.



### **WARNING**

**Be sure deck is supported on all sides and is stable. Be sure cutter is level. DO NOT place hands or feet under cutter. DO NOT crawl under cutter for any reason.**

- 2) Attach clevis to drawbar using a 1" x 6-1/2" bolt with locknut. Clevis must be free to rotate.
- 3) Attach drawbar to the deck using two pins with click pins. Drawbar must be free to rotate.
- 4) Mount the jack stand to the drawbar and use to support the drawbar for further assembly..
- 5) Attach female ends of the control rods to the drawbar and secure using pins with cotter pins.

#### **Lift Roll (Refer to Figure 1)**

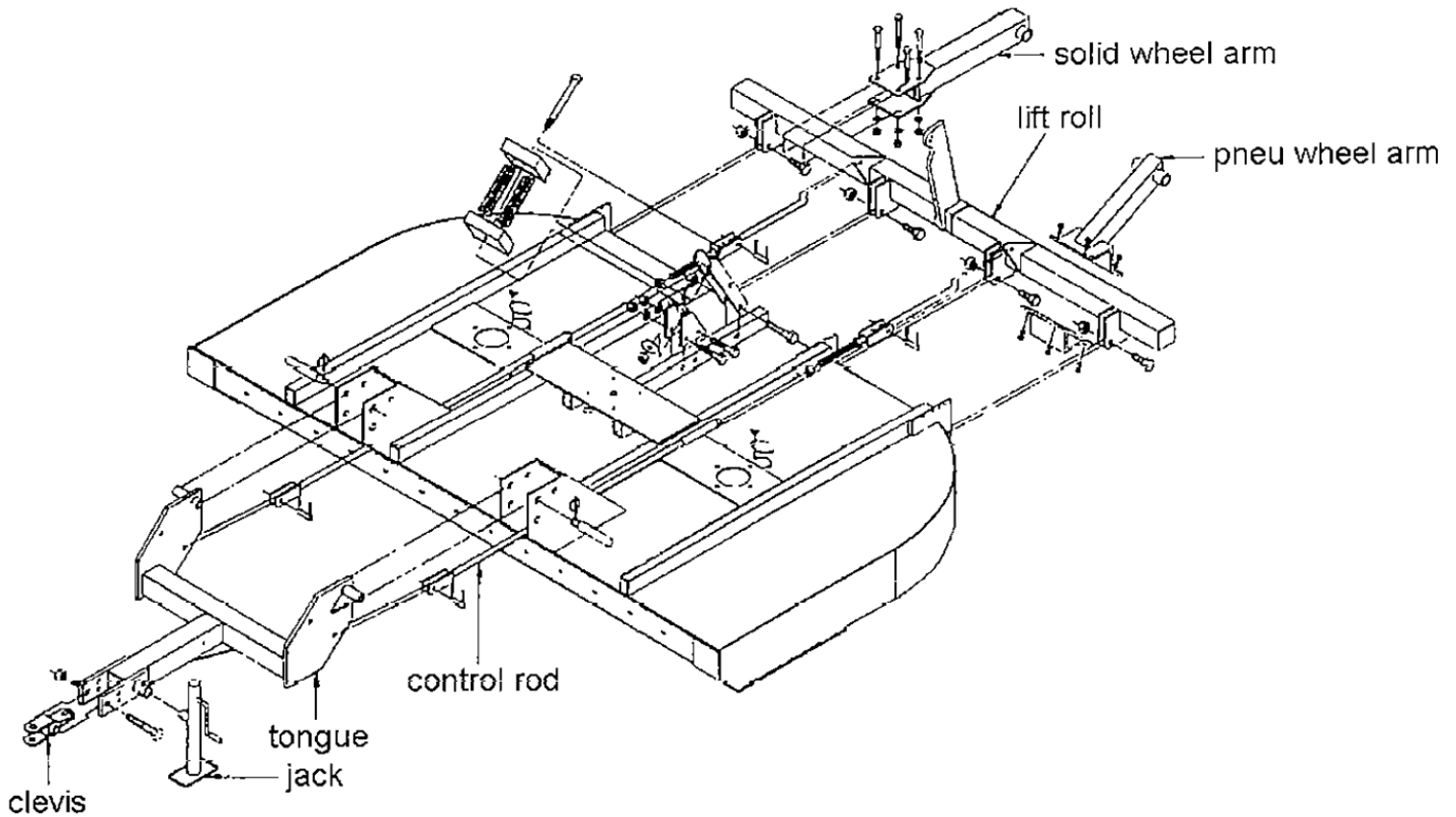
- 1) Attach lift roll to deck using 1" x 3-1/2" bolts with locknuts. Lift roll must be free to rotate.
- 2) Attach male ends of control rods to female ends and secure.

### **10' LIFT TYPE CUTTER**

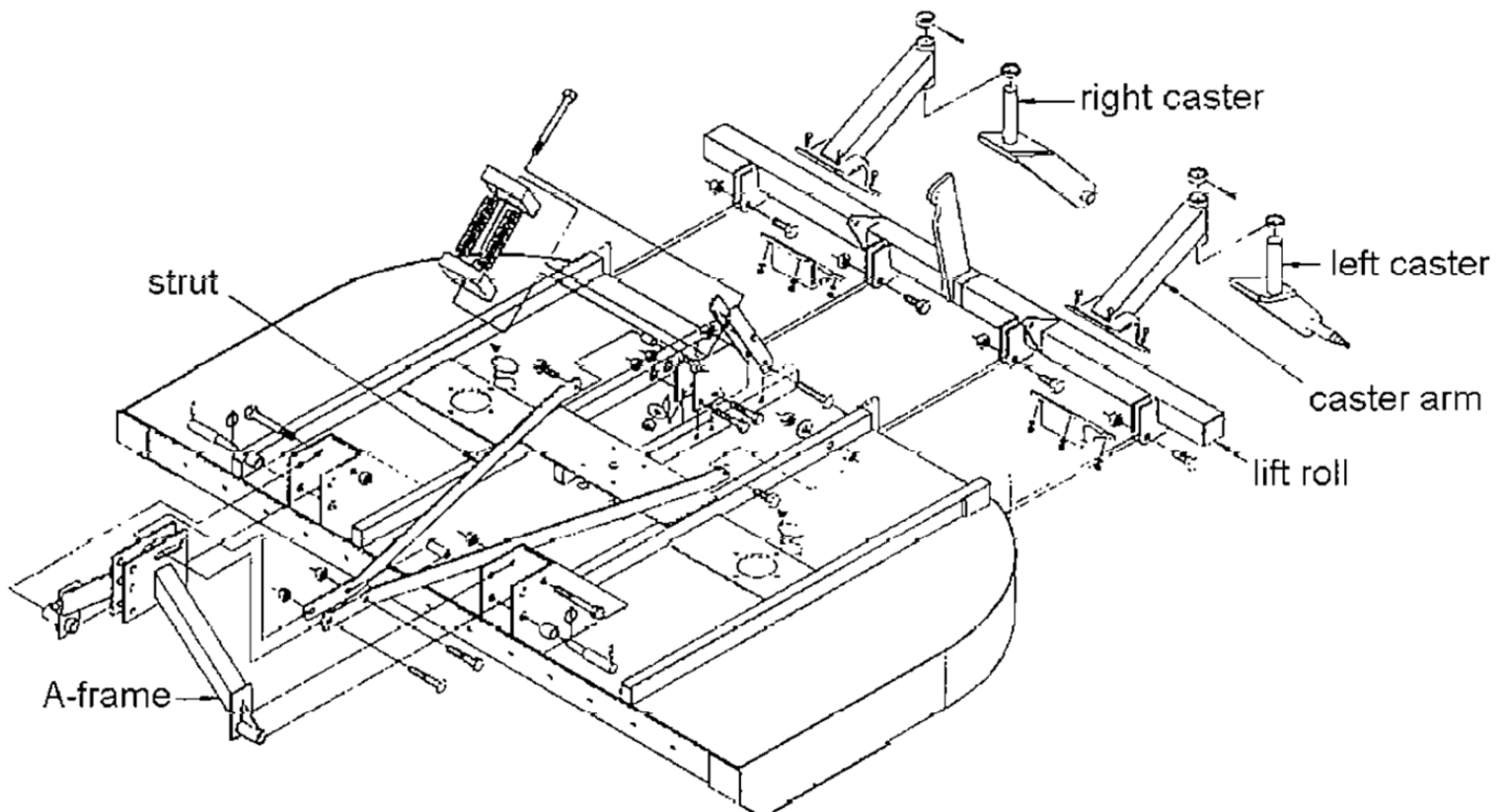
#### **A-Frame & Braces (Refer to Figure 2)**

- 1) Install A Frame in hitch brackets and align with rear set of holes. Secure with 1" x 8" bolt and locknut.
- 2) Install lower link pins in bottom hole of hitch brackets. Secure click pin and spring pin.
- 3) Position A-frame braces with end having two holes toward the hitch.
- 4) With one brace on each side of A-frame, insert a 1" x 5-1/2" bolt through braces and A-frame using the end hole in the braces. Secure with locknut.
- 5) Install another 1" x 5-1/2" bolt through remaining hole with a bushing between the braces. Secure with locknut.
- 6) Attach other end of braces to deck using a 3/4" x 3-1/2" bolt with bushing and locknut.

**FIGURE 1**  
**PULL TYPE COMPONENTS**



**FIGURE 2**  
**LIFT TYPE COMPONENTS**



## 10' MODEL (Refer to Figure 1 & 2)

- 1) Attach lift roll to deck using 1" x 3" bolts with locknuts. Lift roll must be free to rotate.
- 2) Attach the caster type wheel arms to the lift roll using the wheel arm clamp and 5/8" x 2-1/4" bolts with lock washers and nuts. NOTE: The spindles point outward.
- 3) Attach wheels to casters using nut provided.
- 4) After tires are installed be sure they are resting on the ground and attach turnbuckle to the lift roll and the mount on the deck. Secure with pins and cotter pins provided. If you are using hydraulics refer to HYDRAULIC COMPONENTS.

### Optional deflector shields

Shields are shipped fully assembled and need only to be mounted to cutter deck.

- 1) Arrange shields on ground to be sure of placement on your cutter.
- 2) Attach deflector shield to cutter (front only on 5' & 6') using hardware supplied in the shield bundle.
- 3) Check and tighten all hardware.

## Installing Drive Line

### WARNING

**Keep drive line shields in place at all times and in good repair. Replace broken shields.**

- 1) Depress push button on yoke of drive line while sliding it onto the input shaft of the gearbox.
- 2) With the driveline fed onto the input shaft, release the push button. Slide the driveline further onto the shaft until the push button releases, locking the driveline onto the shaft.
- 3) Push and pull the driveline to ensure it is locked in place.

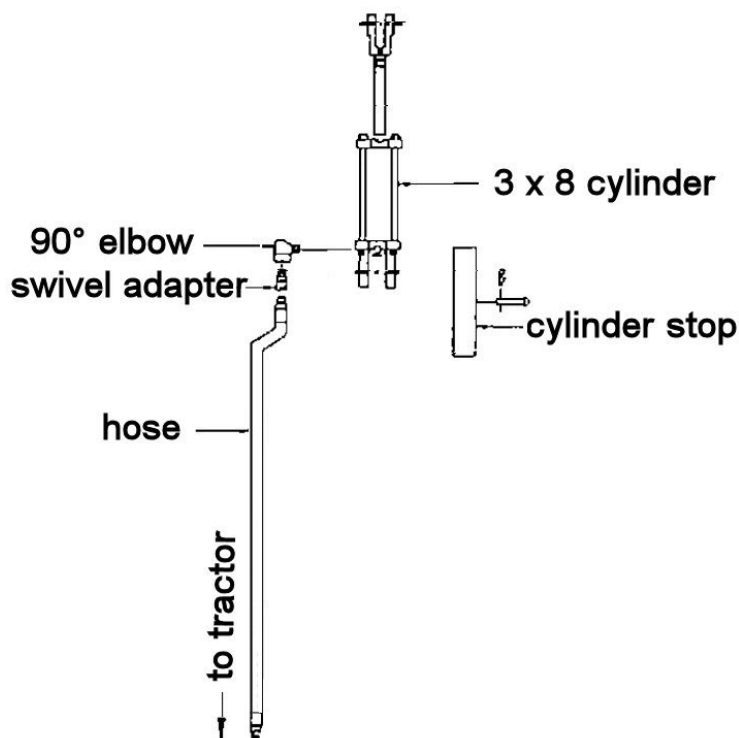


FIGURE 3—HYDRAULIC COMPONENTS

- 4) Attach shield retaining chain included with drive line to shield and A-frame or tongue. The chain keeps the drive line shield from rotating when the PTO is engaged. Make sure the chain is installed properly at all times to prevent rotating of shield.

## **10' CONNECTOR SHAFTS & SHIELD**

The connector shafts attach between the center gearbox and the outboard gearboxes and are used on both the lift type and the pull type machines.

- 1) Attach 1-3/4" end of shaft to the center gearbox and slide other end onto outboard gearboxes.
- 2) Attach shield using bolts in the top of the center gearbox.

### **Hydraulic Components (Refer to Figure 6)**

- 1) Attach butt end of cylinder to mount on deck. Be sure cylinder ports are up.
- 2) Remove cylinder port plugs from cylinder body.
- 3) Extend piston to align clevis with arm on lift roll.
- 4) Pin clevis to arm using pin provided. Secure with hairpin clips.
- 5) Install 90° elbow into butt end cylinder port. Install swivel end of hydraulic line into elbow. Use a threaded sealant to seal the fittings and prevent leakage. Be sure not to over tighten fittings.

## **BEFORE OPERATION**

- 1) Tighten all loose hardware using the bolt torque chart. **SEE ASSEMBLY.** Replace any missing hardware. On new machines, all hardware must be rechecked after the first few hours of operation.
- 2) Replace any bent or broken parts.
- 3) Perform lubrication on cutter as recommended. **SEE MAINTENANCE**
- 4) Refer to your Tractor's Owner's Manual for recommended adjustments and weight distribution.
- 5) Check gearbox oil level, it should be midway up horizontal shaft. Use 90EP gear oil. **DO NOT OVERFILL.**

- 6) Check gearbox mount bolts to see that they are tight.
- 7) Check all shields and make sure they are in place.
- 8) Check blades for signs of wear or damage. Sharpen dull blades and replace bent or broken blades. **SEE BLADE REPLACEMENT**
- 9) Inspect hydraulic lines and fittings for wear or leaks. Repair or replace if needed.



### **WARNING**

**Check for small high pressure leaks by passing a piece of cardboard or wood over lines rather than hands. High pressure oil can penetrate skin and can only be removed surgically.**

- 10) Read the safety section of this manual to be sure of all precautions.

## **ATTACHING**

### **LIFT TYPE**

- 1) Back tractor to align three point hitch.



### **WARNING**

**Be sure bystanders are clear. Do not stand between cutter and tractor. Shut off tractor and engage parking brake prior to dismounting.**

- 2) Attach tractor lower link arms to cutter. Secure using click pins.
- 3) Attach top link between tractor and cutter. Secure with click pins.
- 4) Attach driveline to tractor by pushing in on pushbutton and sliding the yoke onto the tractor's PTO shaft. Make sure the push button releases and locks the driveline into place.
- 5) Attach shield retaining chain included with driveline to driveline shield and to cross member on A-frame. The chain keeps the driveline shield from rotating when the PTO is engaged. Make sure the chain is installed properly at all times to prevent rotation of shield.

## **PULL TYPE**

- 1) Back tractor to align drawbar with clevis.
- 2) Insert drawbar pin through clevis and drawbar. Secure hairpin clip.
- 3) Attach driveline to tractor by pushing in on pushbutton and sliding the yoke onto the tractors PTO shaft. Make sure the push button releases and locks the driveline into place.
- 4) Attach shield retaining chain included with driveline to drawbar to prevent rotation of shield when the PTO is engaged.
- 5) Attach hydraulic line to tractor hydraulic system.
- 6) Crank jack stand up and remove pin, the rotate 90° and reinstall pin.

## **OPERATION**

- 1) With tractor at a slow idle, engage the PTO slowly and let the cutter run for several seconds.
- 2) Gradually increase throttle speed until operating speed is obtained. Listen for unusual noises or vibrations. Shut the tractor off immediately if excessive noise or vibration occurs. Allow all moving parts to come to a complete stop and investigate cause.
- 3) A new gearbox will noisy in the first few hours of operation until the gears mesh.
- 4) Get to know the feel of your new cutter on familiar ground that is free of obstacles.

## **ADJUSTMENTS**



### **WARNING**

**Do not make any adjustments while cutter is in motion or when PTO is engaged.**

### **LIFT TYPE**

#### **Side To Side Leveling**

- 1) Your cutter should be level side to side. With the cutter and tractor on level ground, use the tractor's link arm crank to adjust the lower link arm up or down as needed to level the cutter.

#### **Front To Rear Leveling**

- 1) Using the tractor's three point lift , position the cutter at the desired cutting height.
- 2) Adjust the top link in or out so that the front of the cutter is about 1" lower than the rear. At this slight angle, the cutter does not require as much power. Fuel economy and cutter performance are thereby improved.
- 3) Check the tailwheel to see that it contacts the ground. If it does not, lower the bolt to the next hole in the adjustment bracket to lower tailwheel as needed to meet the ground.
- 4) If the tailwheel is too low causing too much front to rear tilt, adjust the tailwheel up by moving bolt in the adjustment bracket up to the next hole. Re-adjust the top link to properly position deck with slight forward tilt.

### **PULL TYPE**

#### **Front To Rear Leveling**

- 1) Park cutter on level ground.
- 2) Position 1" thick blocks under rear corners of cutter deck.
- 3) Lower cutter so that front skids rest on ground and rear rest on blocks. Allow wheels to remain on ground.

- 4) Support drawbar with jack stand and relieve weight from control rods.
- 5) Disconnect control rods from lift roll.
- 6) Use jack stand to adjust hitch clevis to new drawbar height.
- 7) Adjust control rod turnbuckles to realign with arms on lift roll.
- 8) Connect control rods to lift roll.

### Cutting Height

Cutting height on your pull type cutter is changed by using the hydraulic lift or turnbuckle.

### WARNING

When making height adjustments using the turnbuckle, be sure tractor is shut off, PTO is disengaged, and all moving parts have come to a complete stop prior to making adjustments.

### Driveline Interference Check

- 1) Start the tractor engine and slowly lift cutter until the driveline is at it's shortest position. At this point, the two shafts should lack two inches from touching.
- 2) Now lower the cutter until the driveline is extended to its longest position. At this point the two shafts should engage at least six inches.
- 3) Be sure the driveline clears the cutter deck when the cutter is raised. If it does not, readjust the top link on the hitch to correct the problem. The tailwheel may then have to be adjusted so the cutter can be properly positioned for operation.

## TRANSPORTING

- 1) Disengage PTO and allow all moving parts to completely stop.
- 2) Lift cutter to fully raised position.
- 3) On cutters with hydraulic lift, install cylinder stop and secure with pin provided. Retract cylinder to engage stop and relieve

pressure from hydraulic lines.

- 4) Transport at speeds compatible with safety and no more than 20 mph.
- 5) Use care when transporting on rough terrain.
- 6) When traveling on public roads, always have a slow moving vehicle (SMV) emblem mounted to the tractor such that it is visible from the rear.
- 7) Avoid travel on public roads at night. Comply with all state and local laws governing lighting requirements in addition to SMV emblem.

## MAINTENANCE

### WARNING

Do not perform any maintenance while tractor is running or when cutter is in motion.

### Gearbox

- 1) Check oil level in gearbox every 40 hours of use. Fill to side level port using only SAE 90 EP gear oil.
- 2) Check mount bolts before each use to be sure they are tight.

### Blade Inspection and Replacement

Inspect blades before each use. Remove blades to sharpen.

Always sharpen blades at the same time to maintain balance. Follow original sharpening pattern. Do not sharpen blade to razor edge. Leave from 1/16" to 1/8" blunt edge. Do not sharpen back side of blade.

Replace blades in pairs if blades are damaged. To replace blades, follow the steps below:

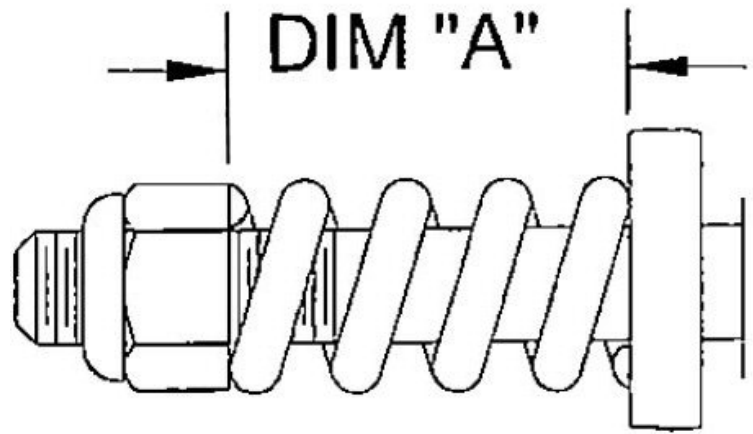
- 1) **Support cutter from below on all sides.** **DO NOT** rely on tractor's hydraulic lift alone to support cutter. Be sure cutter is stable before proceeding.
- 2) Remove blade nuts through the hole in the cutter deck.

- 3) Using a punch, drive the blade bolts out of the blade holder.
- 4) Insert blade bolts in new blades so that flare in blade tip is up. Insert bolt with blade onto blade holder by aligning notch in hole with shoulder on bolt.
- 5) Replace nuts on bolts and tighten.



## WARNING

On 10' models, if stump jumpers are removed, be sure to replace with blade sets positioned 90° apart. If not, blades will collide during rotation.



## Slip Clutch

### Operational Check:

On a new unit or one that has been stored between seasons, perform the following check:

- 1) Loosen all spring retaining nuts until springs can be turned with fingers.
- 2) With tractor at idle speed, engage PTO for 2 - 3 seconds. Clutch should slip without turning the blades. If not, contact your dealer.
- 3) Retighten nuts to compress springs according to diagram. **Dim "A" = 1.16"** for Bondioli clutches and **Dim "A" = 1.28"** for Comer clutches.



## WARNING

Failure to retighten nuts may cause damage to cutter and/or tractor due to improper slip clutch torque setting.

### Adjustment:

The slip clutch is designed to slip when blades encounter heavy brush or solid permanent objects. If this is not occurring or clutch slips too much (i.e. smoke appears around clutch), adjustment should be made as follows:

- 1) Check to be sure that all springs are compressed to the correct length. Adjust spring length by tightening or loosening retaining nut.
- 2) If clutch still perform improperly, tighten or loosen all nuts in 1/32" increments until clutch perform properly.

### SLIP CLUTCH SPRING ADJUSTMENT

- 3) If excessive adjustment is necessary, consult your dealer.

### Lubrication Schedule

Clean grease fittings before applying grease. Use a multipurpose , lithium base grease.

#### Before Each Use

Tail Wheel - Apply grease at arm fitting and hub fitting.

**Drive Line** - Lubricate universal joints at fittings and drive line shield at fittings.

#### Every 8 Hours

Drive Line - Lubricate universal joints at fittings and drive line shield at fittings.

#### Every 16 Hours

Drive Line - Lubricate push buttons with oil.



## Before Each Use

Tailwheel - Apply grease at wheel hub fitting.

Driveline - Lubricate universal joints at fittings and driveline shield at fittings.

## Every 8 Hours

Driveline - Lubricate universal joints at fittings and driveline shield at fittings

Gearbox - Use SAE 90EP Gear oil if needed.

## Every 16 Hours

Driveline - Lubricate push buttons with oil

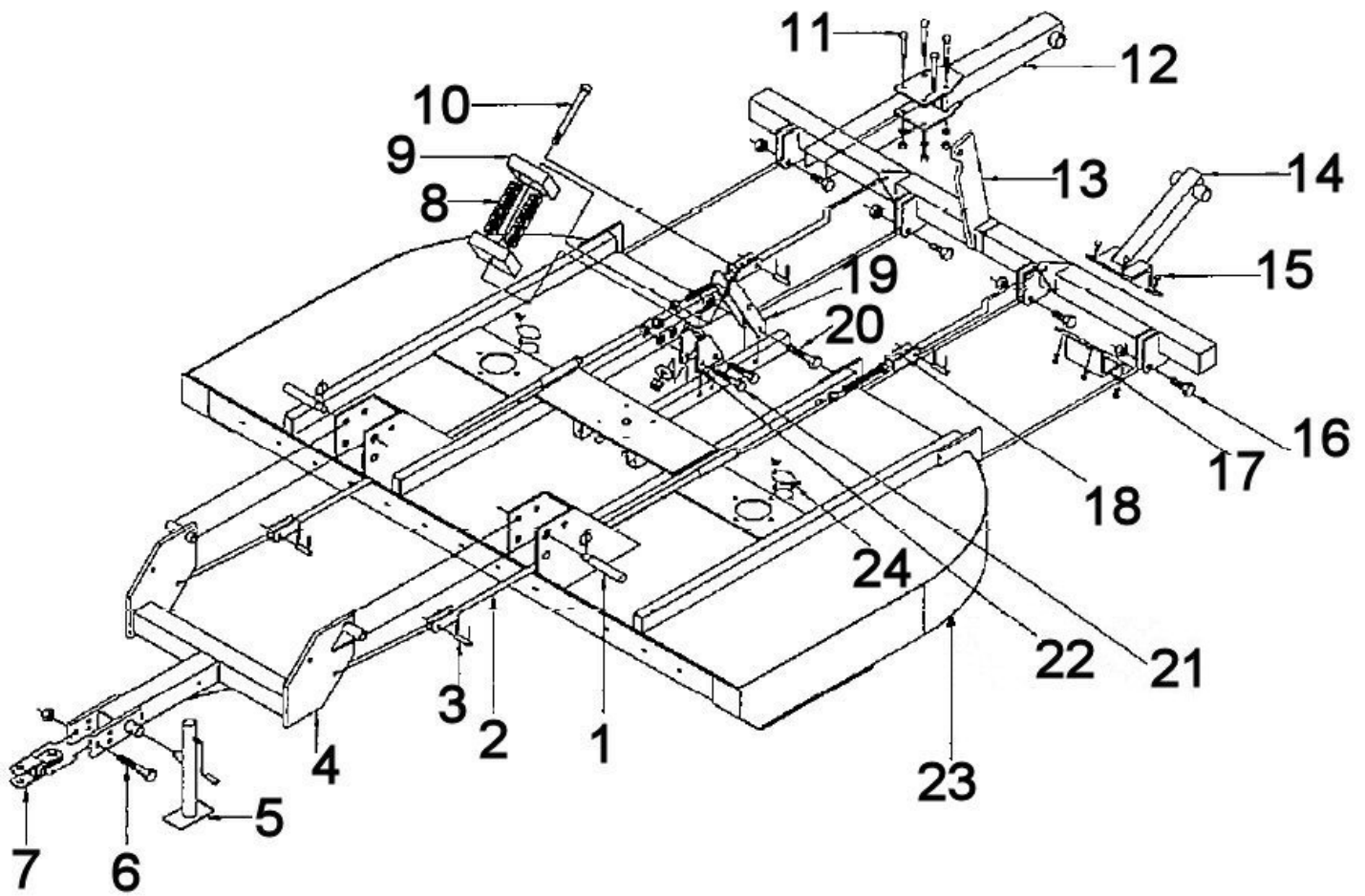
Disconnect driveline and separate sections. Apply a thin coat of grease to outside of male shaft. Reassemble driveline and install. Be sure driveline is locked in place and shield retaining chain is properly attached.

## STORAGE

- 1) Clean all debris from cutter deck and driveline.
- 2) Store cutter on a level surface sheltered from the weather.
- 3) Store cutter supported on blocks to allow air circulation beneath cutter.
- 4) Support tractor end of driveline to keep off the ground.

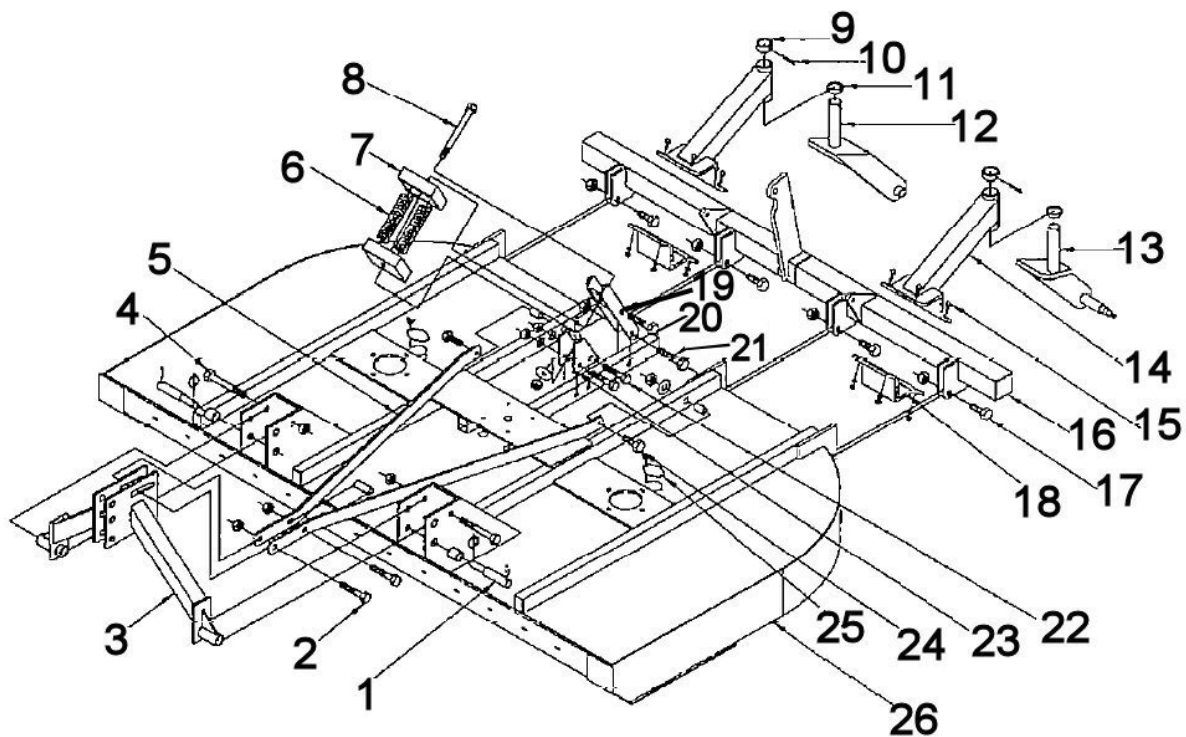
## MISCELLANEOUS HARDWARE BY SIZE

Size	Part Number By Item			
	Lock washer	Flat washer	Regular Hex Nut	Hex Locknut
1/4"	303951	-	304003	-
5/16"	303952	303968	304004	-
3/8"	303953	303969	304005	304018
7/16"	303954	303970	304006	304019
1/2"	303955	303971	304007	304020
5/8"	303956	303972	304008	304021
3/4"	303957	303973	304009	304022
7/8"	303958	303974	304010	304023
1"	303959	303975	304011	304024
1-1/8"	303960	303976	304012	304025
1-1/4"	303961	303977	304013	304026



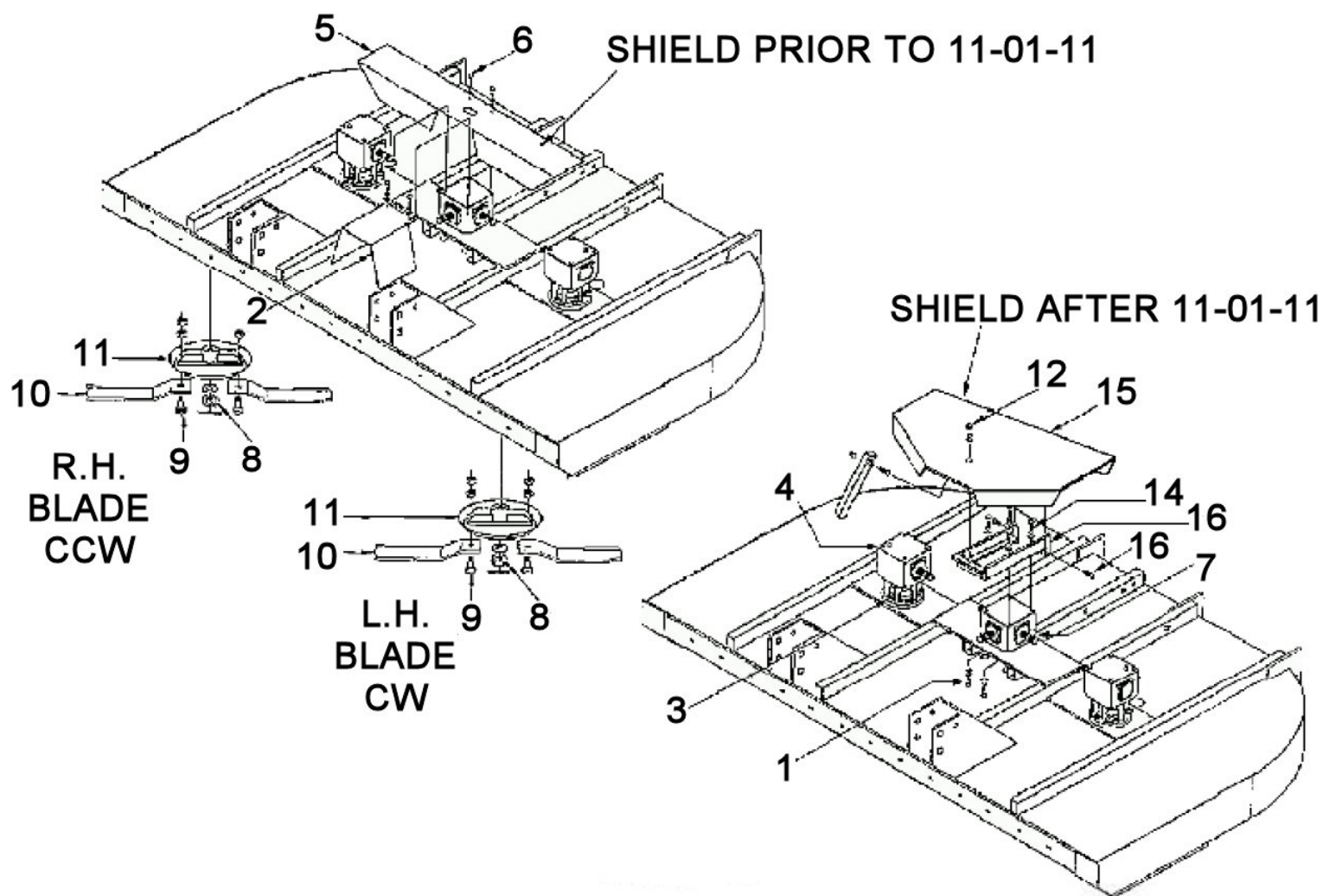
**Figure 4. 10' Pull Type Components**

ITEM	PART #	DESCRIPTION	QTY.	ITEM	PART #	DESCRIPTION	QTY.
1	042138	HITCH PIN	2	13	811347	LIFT ROLL	1
	303113	CLICK PIN	2	14	809382	PNEUMATIC TAILWHL ARM	2
2	810688	CONTROL ROD/FEMALE	2	15	303677	HHCS 5/8" X 2-1/4" GR5	8
3	204758	PIN 3/4" OD X 3-1/4" LONG	4	16	303757	HHCS 1" X 3" GR5	4
	304122	PIN/COTTER 1/4" X 1-1/2"	8	17	810715	WHEEL ARM CLAMP	2
4	810658	TONGUE	1	18	812237	CONTROL ROD/MALE	2
5	808026	JACK	1		304011	NUT/HEX 1" NC	2
6	303764	HHCS 1" X 6-1/2" GR5	1	19	813753	CYLINDER MOUNT	1
7	809451	CLEVIS	1	20	303762	HHCS 1" X 5-1/2" GR5	1
8	206612	SPRING/COMPRESSION	2		812151	SPACER	2
9	812230	SPRING PAD	2	21	303707	HHCS 3/4" X 5" GR5	2
10	812241	SPRING ROD WELD	1		808557	SPACER	4
11	303709	HHCS 3/4" X 6" GR5	8	22	810703	SPRING ANCHOR BRACKET	1
12	809382	SOLID TAILWHEEL ARM	2	23	811344	DECK/10' WELD	1



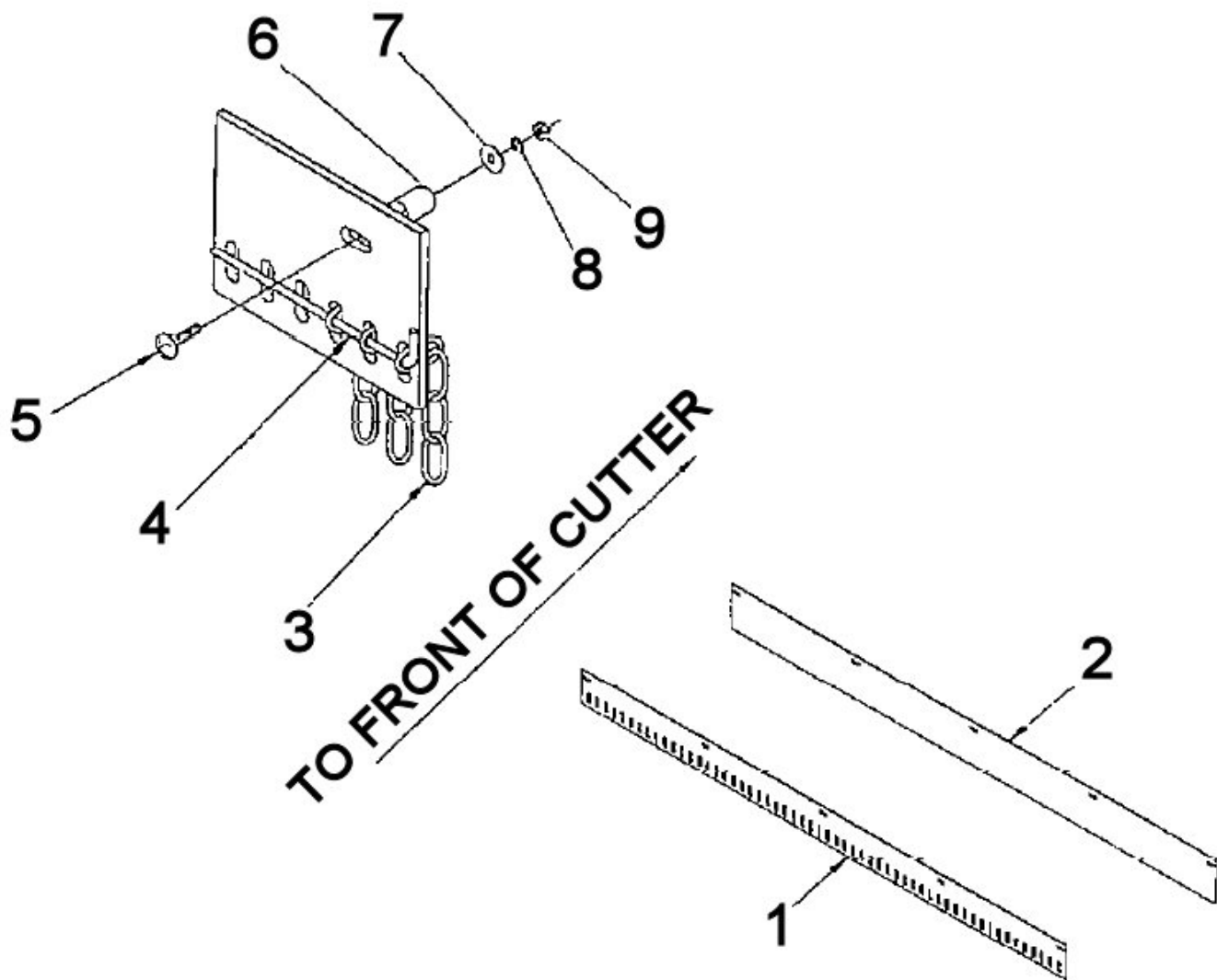
**FIGURE 5 - 10' LIFT TYPE COMPONENTS**

ITEM	PART #	DESCRIPTION	QTY.	ITEM	PART #	DESCRIPTION	QTY.
1	042137	CAT II LINK PIN	2	14	810714	CASTER WHEEL ARM	2
	607079	BUSHING	2	15	303677	HHCS 5/8" X 2-1/4"	8
	304264	PIN/ROLL 7/16" X 2"	2	16	811347	LIFT ROLL	1
	303113	CLICK PIN	2	17	303757	HHCS 1" X 3" GR5	4
2	303762	HHCS 1" X 5-1/2"	2	18	810715	WHEEL ARM CLAMP	2
	810684	SPACER	1	19	813753	CYLINDER MOUNT	1
	304030	NUT/HEX LOCK 1" NC	2	20	303764	HHCS 1" X 6-1/2" GR5	1
3	810675	A-FRAME	1		304030	NUT/HEX LOCK 1" NC	1
4	303767	HHCS 1" X 8" GR5	2	21	303762	HHCS 1" X 5-1/2" GR5	1
	304030	NUT/HEX LOCK 1" NC	2		812151	SPACER	2
5	812187	STRUT	2		804030	NUT/HEX LOCK 1" NC	1
6	206612	SPRING/COMPRESSION	2	22	303707	HHCS 3/4" X 5" GR5	2
7	812230	SPRING PAD	2		808557	SPACER	4
8	812241	SPRING ROD WELD	1	23	810703	SPRING ANCHOR BRACKET	1
	303775	WASHER FLAT 1"	2	24	303704	HHCS 3/4" X 3-1/2"	2
	304030	NUT/HEX LOCK 1" NC	1		304022	NUT/HEX LOCK 3/4" NC	2
9	810736	BUSHING/SWIVEL	2		812152	BUSHING	2
10	304246	PIN/ROLL 5/16" X 3"	2	25	811650	ACCESS HOLE COVER	2
11	810722	BUSHING/WEAR	2		304214	NUT/WING 3/8"	2
12	810718	RIGHT CASTER ARM	1	26	811344	10' DECK WELDMENT 270	1
13	810737	LEFT CASTER ARM	1				



**FIGURE 6 - 10' SHIELDS, GEARBOXES AND STUMP JUMPERS**

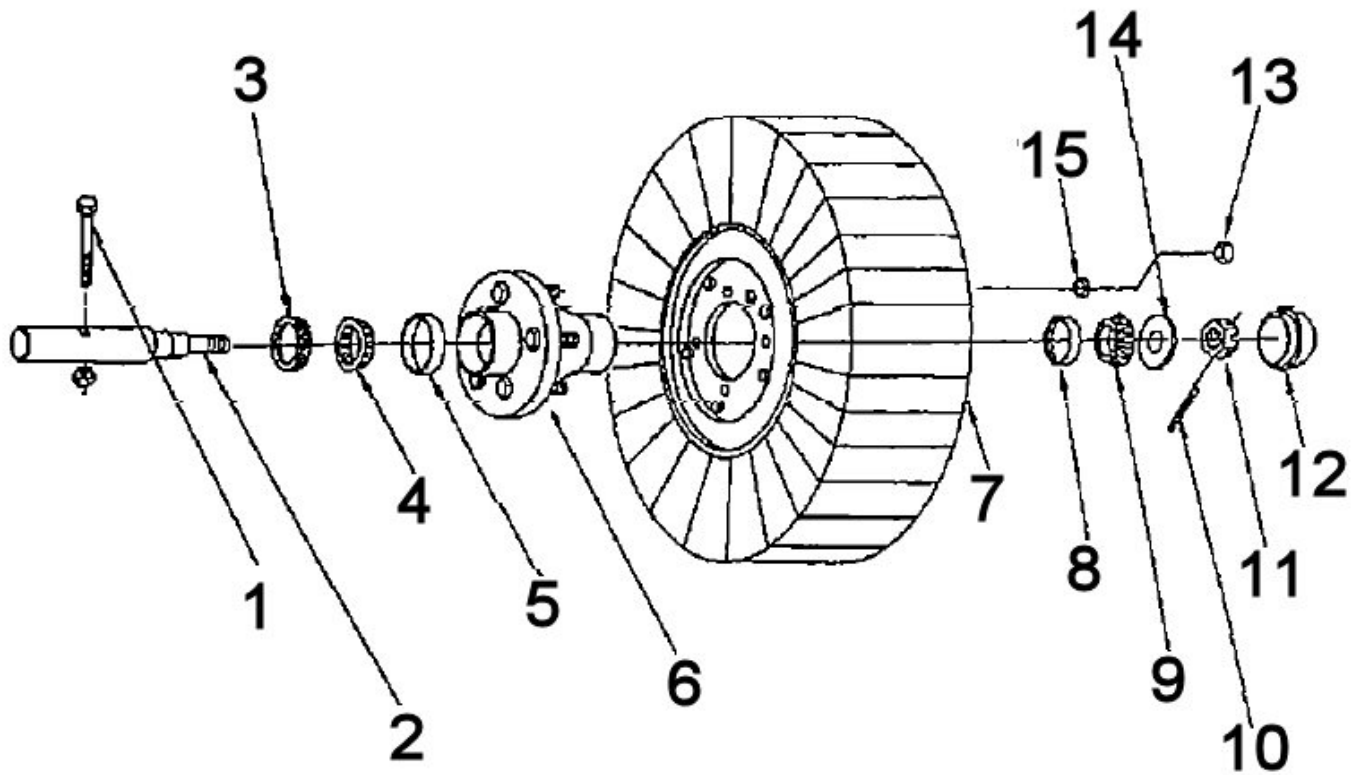
ITEM	PART #	DESCRIPTION	QTY	ITEM	PART #	DESCRIPTION	QTY
1	303651	HHCS 1/2" X 1-1/2" GR5	4	10	811411	R.H. BLADE CCW	2
2	809254	CLUTCH SHIELD	1		811412	L.H. BLADE CW	2
3	303701	HHCS 3/4" X 2-1/2" GR5	8	11	608202	STUMP JUMPER	2
4	608302	SPINDLE GEARBOX	2	12	304215	NUT/WING 1/2 NC ZINC PLT	1
5	809220	CONNECTOR SHIELD	1	13	608460	TENT SHIELD - WELDMENT	1
6	303649	HHCS 1/2" X 1" GR5	4	14	303649	HHCS 1/2" X 1" GR5	4
7	608303	T-GEARBOX	1	15	608465	SHIELD MOUNT - WELDMENT	1
8	505309	NUT/HEX CASTLE M30 X 2	2	16	303649	HHCS 1/2" X 1" GR5	2
	505308	WASHER/FLAT	2	17	608471	SHIELD STAND	1
	809286	PIN/COTTER	2	18	303618	HHCS 3/8 X 2-1/2 GR5	1
9	*50573901	BLADE BOLT	4				
	303960	WASHER/LOCK 1-1/8	4				
	304765	NUT-CASTLE 1-1/8" NF-PLAIN GR8	8				



**FIGURE 7 - SHIELD COMPONENTS**

ITEM	PART #	DESCRIPTION
1	811355	FRONT & REAR CHAIN PLATE
2	811356	FRONT & REAR DEFLECTOR
3	805325	CHAIN 4 LINKS
4	806718	FRONT & REAR CHAIN ROD
5	303991	BOLT/CARR 3/8 X 2-1/2 GR5
6	286550	SPACER .84 OD X .54 ID X 1.06 (FRONT & REAR)
7	303969	WASHER/FLAT 3/8"
8	303953	WASHER/LOCK 3/8"
9	304005	NUT/HEX 3/8" NC
<b>SHIELD KITS</b>		
812185		CHAIN KIT 10'
812186		DEFLECTOR KIT 10'

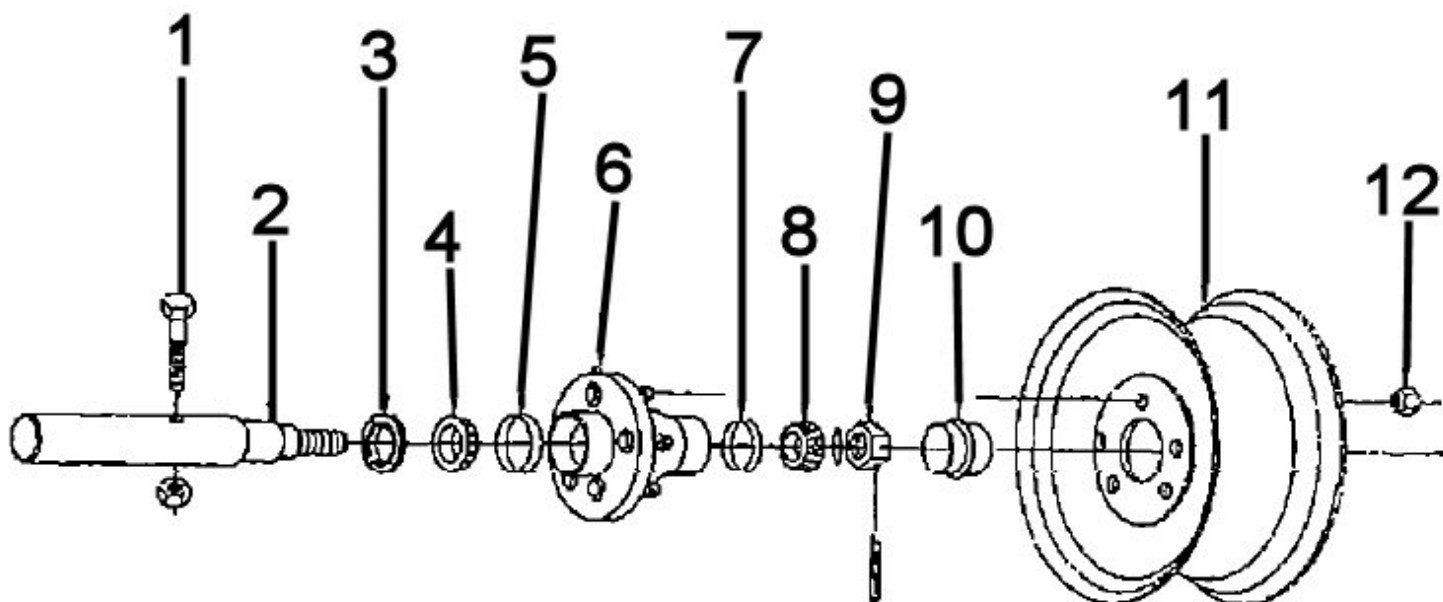
## 5 - BOLT LAMINATED WHEEL COMPONENTS



**FIGURE 8 - LAMINATED WHEEL COMPONENTS**

ITEM	PART #	DESCRIPTION	QTY.
1	303657	HHCS 1/2" X 3" GR5	1
	304020	HEX LOCKNUT 1/2" NC	1
2	608532	SPINDLE/SINGLE ENDED	1
	608531	SPINDLE/DOUBLE ENDED	1
3	608530	SEAL/GREASESINGLE LIP	1
4	608528	CONE/BRG INNER - LM48548	1
5	608527	CUP/ BRG. INNER - LM48510	1
6	608526	HUB/WHEEL 5 BOLT (INCL. 4 & 7)	1
7	608537	TIRE / LAMINATED 5-LUG 5-1/2" X 21"	1
8	206332	BEARING-CUP LM67010	1
9	811199	CONE/BRG LM67048	1
10	304094	PIN/COTTER 5/32" X 1-1/4"	1
11	403853	NUT/HEX SLOTTED 3/4 - 16 UNF	1
12	608529	CAP / HUB	1
13	508430	NUT-LUG-1/2" 20 PLATED	5
14	608550	WASHER/3/4" HVY HT	1
15	303955	WASHER/LOCK 1/2"	5

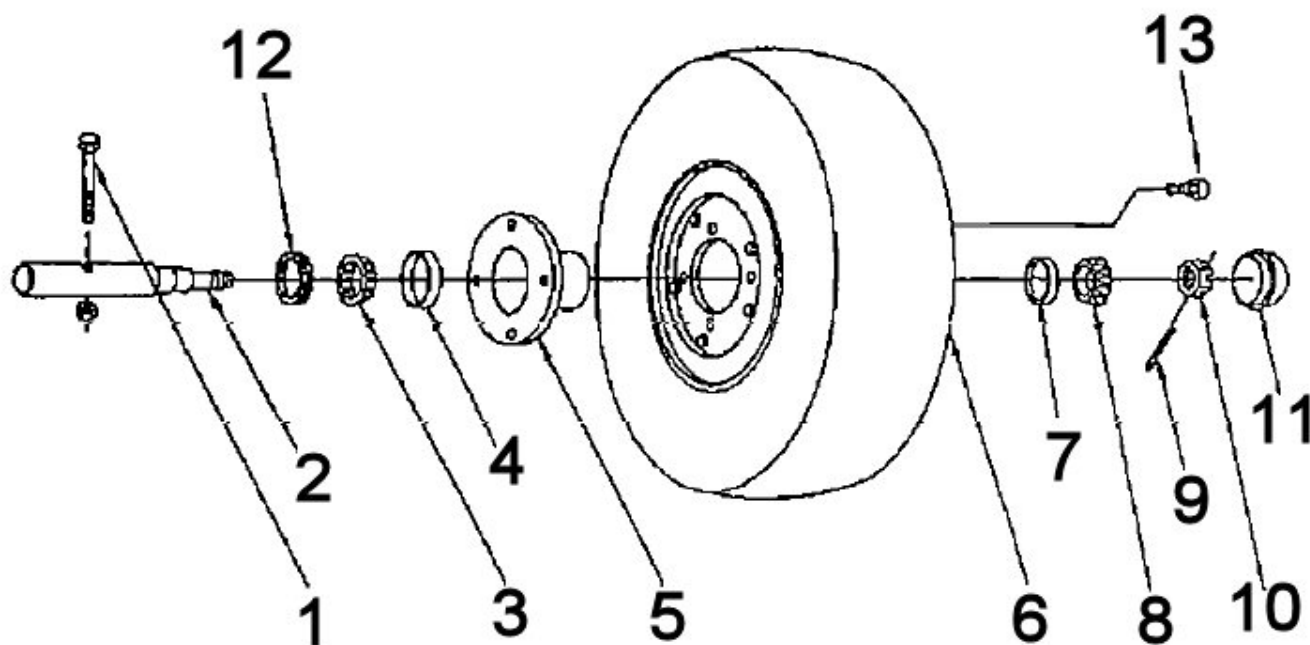
## 5 - BOLT PNEUMATIC WHEEL COMPONENTS



**FIGURE 9 - PNEUMATIC WHEEL COMPONENTS**

ITEM	PART #	DESCRIPTION	QTY.
1	303657	HHCS 1/2" X 3" GR5	1
	304020	HEX LOCKNUT 1/2" NC	1
2	608532	SPINDLE/SINGLE ENDED	1
	608531	SPINDLE/DOUBLE ENDED	1
3	608530	SEAL/GREASESINGLE LIP	1
4	608528	CONE/BRG INNER - LM48548	1
5	608527	CUP/ BRG. INNER - LM48510	1
6	608526	HUB/WHEEL 5 BOLT (INCL. 4 & 7)	1
7	206332	BEARING-CUP LM67010	1
8	811199	CONE/BRG LM67048	1
9	403853	NUT/HEX SLOTTED 3/4 - 16 UNF	1
10	608529	CAP / HUB	1
11	386080	RIM-WHEEL 15 X 5 & DISC 5 BOLT	1
12	508430	NUT-LUG-1/2" 20 PLATED	5
-	304938	TIRE-TUBELESS 8 PLY 7.6 X 15"	1

## 4 - BOLT AIRCRAFT WHEEL COMPONENTS

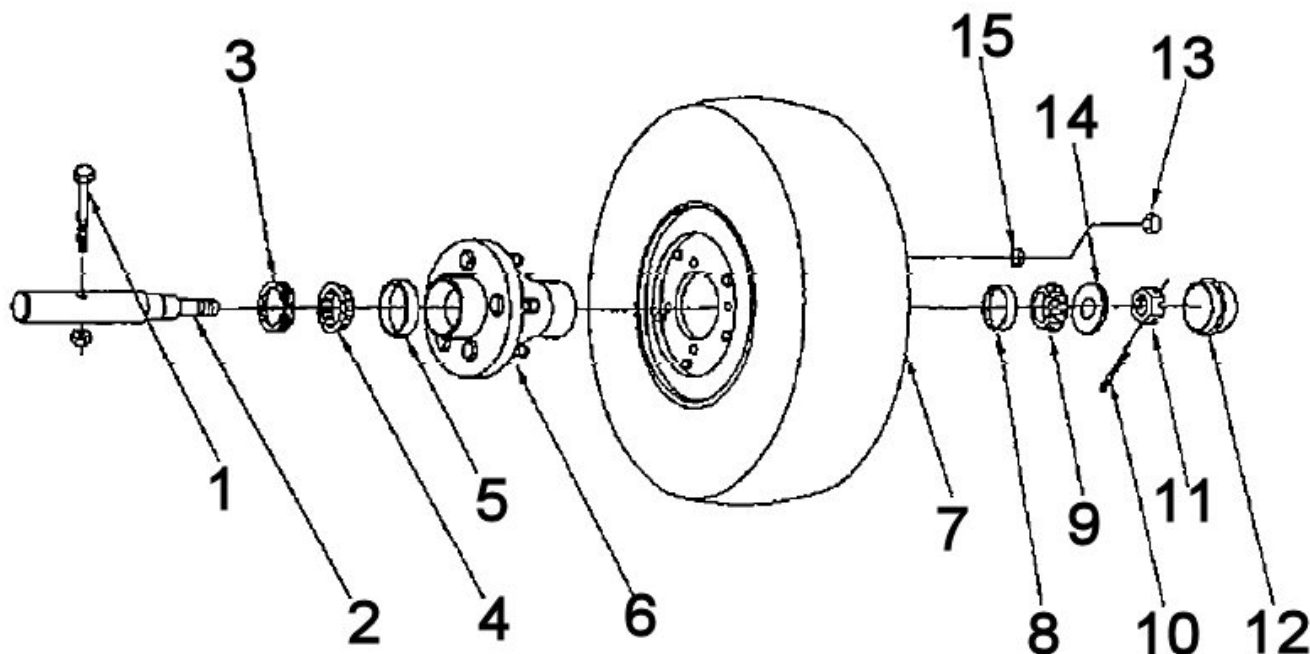


**FIGURE 10 - AIRPLANE WHEEL COMPONENTS**

ITEM	PART #	DESCRIPTION	QTY.
1	303657	HHCS 1/2" X 3" GR5	1
	304020	HEX LOCKNUT 1/2" NC	1
2	807430	SPINDLE SINGLE LAM.	1
	807431	SPINDLE DUAL WHEEL LAM. 4-LUG	1
3	811199	CONE/BRG LM67048	1
4	206332	BEARING-CUP LM67010	1
5	386400	HUB WHEEL W/CUPS& ZERK 4 BOLT	1
6	809338	TIRE-AIRPLANE 26X6.6 X 14-4-HOLE	1
7	206334	CUP/BRG LM11910	1
8	811200	CONE/BRG LM11949	1
9	304094	PIN/COTTER 5/32" X 1-1/4"	1
10	403853	NUT/HEX SLOTTED 3/4 - 16 UNF	1
11	447970	HUB CAP	1
12	386280	SEAL/GREASE CR16069	1
13	403817	LUG-BOLT HEX HD1/2-20 UNFX 1-1/2"	4

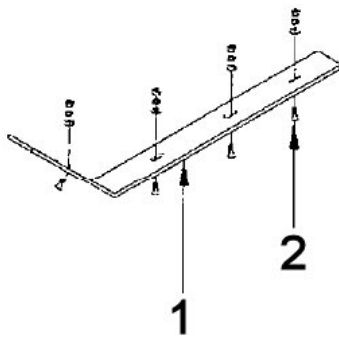


## 5 - BOLT AIRCRAFT WHEEL COMPONENTS



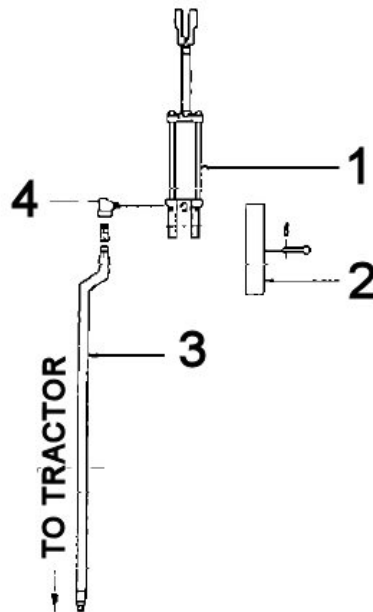
**FIGURE 11 - AIRPLANE OR LAMIINATED WHEEL COMPONENTS**

ITEM	PART #	DESCRIPTION	QTY.
1	303657	HHCS 1/2" X 3" GR5	1
	304020	HEX LOCKNUT 1/2" NC	1
2	608532	SPINDLE/SINGLE ENDED	1
	608531	SPINDLE/DOUBLE ENDED	1
3	608530	SEAL/GREASESINGLE LIP	1
4	608528	CONE/BRG INNER - LM48548	1
5	608527	CUP/ BRG. INNER - LM48510	1
6	608526	HUB/WHEEL 5 BOLT (INCL. 4 & 7)	1
7	608537	TIRE / LAM. 5-LUG 5-1/2" X 21"	1
	608536	TIRE/USED AIRCRAFT 26 X 6.6 X 14	1
8	206332	BEARING-CUP LM67010	1
9	811199	CONE/BRG LM67048	1
10	304094	PIN/COTTER 5/32" X 1-1/4"	1
11	403853	NUT/HEX SLOTTED 3/4 - 16 UNF	1
12	608529	CAP / HUB	1
13	508430	NUT-LUG-1/2" 20 PLATED	5
14	608550	HVY/BACKUP WASHER 15/16IDX1.75	1
15	303955	WASHER/LOCK 1/2	5



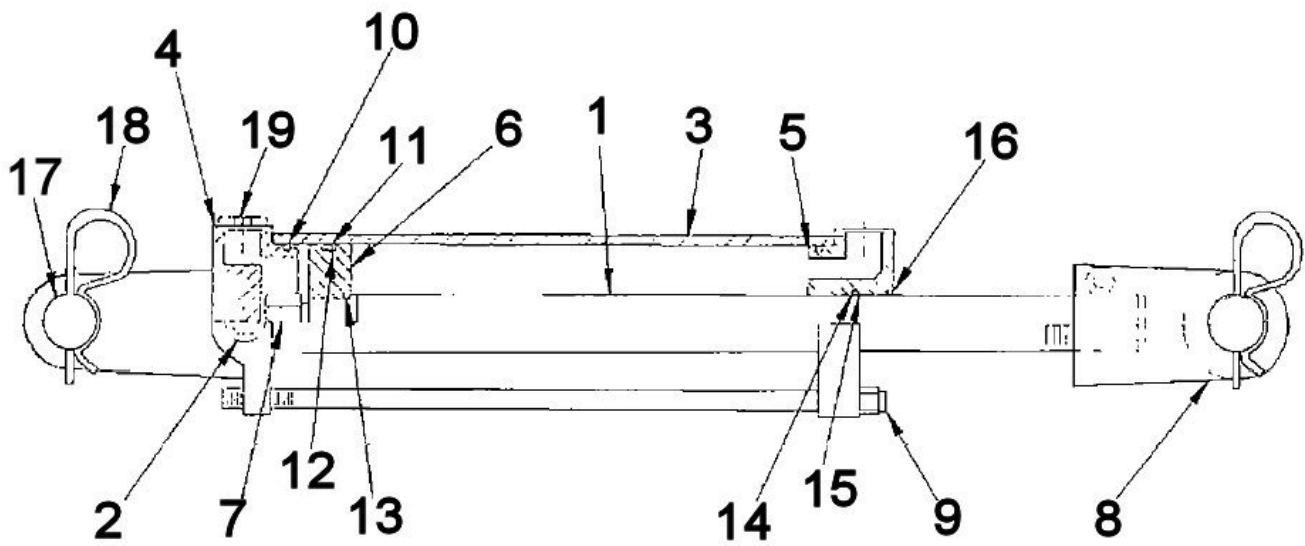
**FIGURE 12 - FIELD INSTALLED SKID SHOE All Models**

ITEM	PART #	DESCRIPTION	QTY.
1	809443	SKID SHOE	2
2	303945	FLT C'SUNK SC HD 5/16X1 1/4 NC	8
812011		FIELD INSTALL SKID SHOE KIT	-



**FIGURE 13 - HYDRAULIC COMPONENTS**

ITEM	PART #	DESCRIPTION	QTY.	ITEM	PART #	DESCRIPTION	QTY.
1	505742	CYLINDER 3 X 8	1		206553	HOLDER-SPRING HOSE	1
	807858	TURNBUCKLE ASSY-RATCHET TYPE (NOT SHOWN)	1		808540	ANGLE- HOSE HOLDER BRKT 290	1
2	811314	CYLINDER STOP	1		811471	FILTER/ CYLINDER BREATHER PIPE	1
	271890	RIVET/DRILLED 1/2 X 3	1		303651	HHCS 1/2" X 1-1/2" GR5	1
	304244	PIN/SPRLK 3/16" X 3 1/4"	1		303661	HHCS 1/2" X 5" GR5	1
3	210534	HYDRAULIC HOSE ASSEMBLY 168"	1		303955	WASHER/LOCK 1/2"	1
	605399	SWIVEL-ADAPT-1/2"-10-1/2"	1		303971	WASHER/FLAT 1/2"	1
4	207982	ELBOW 90°	1		304020	NUT/HEX LOCK 1/2" NC	1
					599040	KIT/ HYDRAULIC LIFT	1



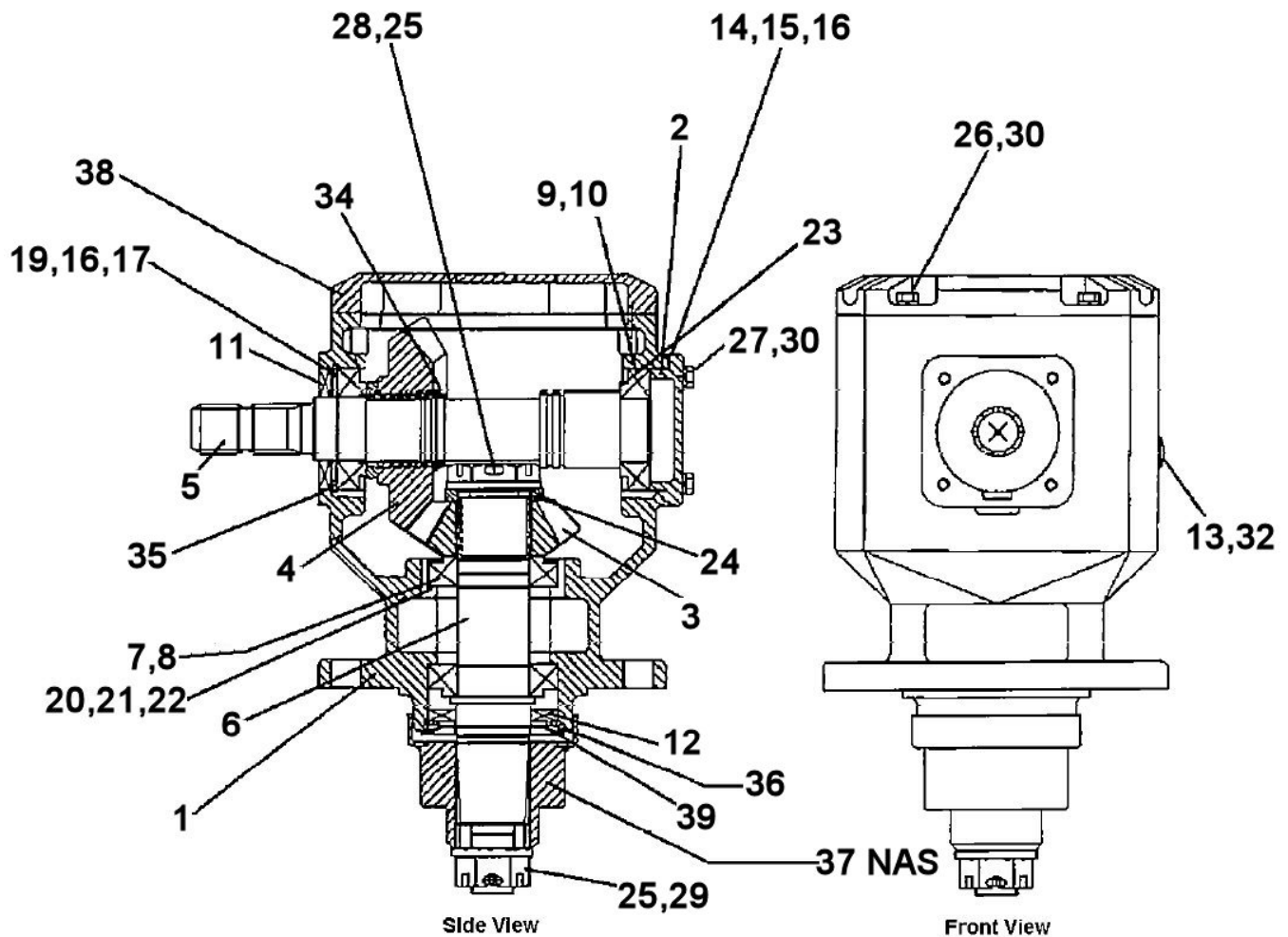
**"These cylinders are tie rod designed with square end."**

**FIGURE 14 - HYDRAULIC CYLINDER COMPONENTS**

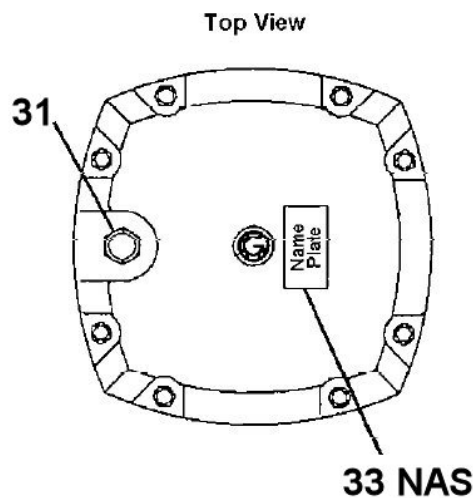
ITEM	PART #	DESCRIPTION	QTY.	ITEM	PART #	DESCRIPTION	QTY.
1	800572	PISTON ROD 3" X 8"	1	13	**	O-RING	1
2	800573	PLUG/SAE #8 "O" RING	3	14	**	O-RING	1
3	800574	BARRELL 3 X 8	1	15	**	BU-WASHER	1
4	800575	BUTT END	1	16	**	WIPER	1
5	800576	GLAND	1	17	606949	PIN/CLEVIS 1" X 3-1/2"	2
6	800577	PISTON	1	18	304244	HAIRPIN COTTER 3/16" X 3-1/4"	4
7	606941	NUT/HEX LOCK 3/4"	1	19	806950	BREATHER "O" RING SAE	1
8	800584	CLEVIS ASSEMBLY 3 X 8	1	**	800585	KIT/PACKING (INCLUDES 10-16)	1
9	800578	TIE ROD 3 X 8	1				
10	**	O-RING	2				
11	**	O-RING	1				
12	**	BU-WASHER	2				
<b>505742</b>		<b>CYLINDER / HYD 3" X 8" COMPLETE</b>					

# OUTBOARD GEARBOX

## FIGURE 15



**Oil Capacity- 57oz. / (1.7 liters)**

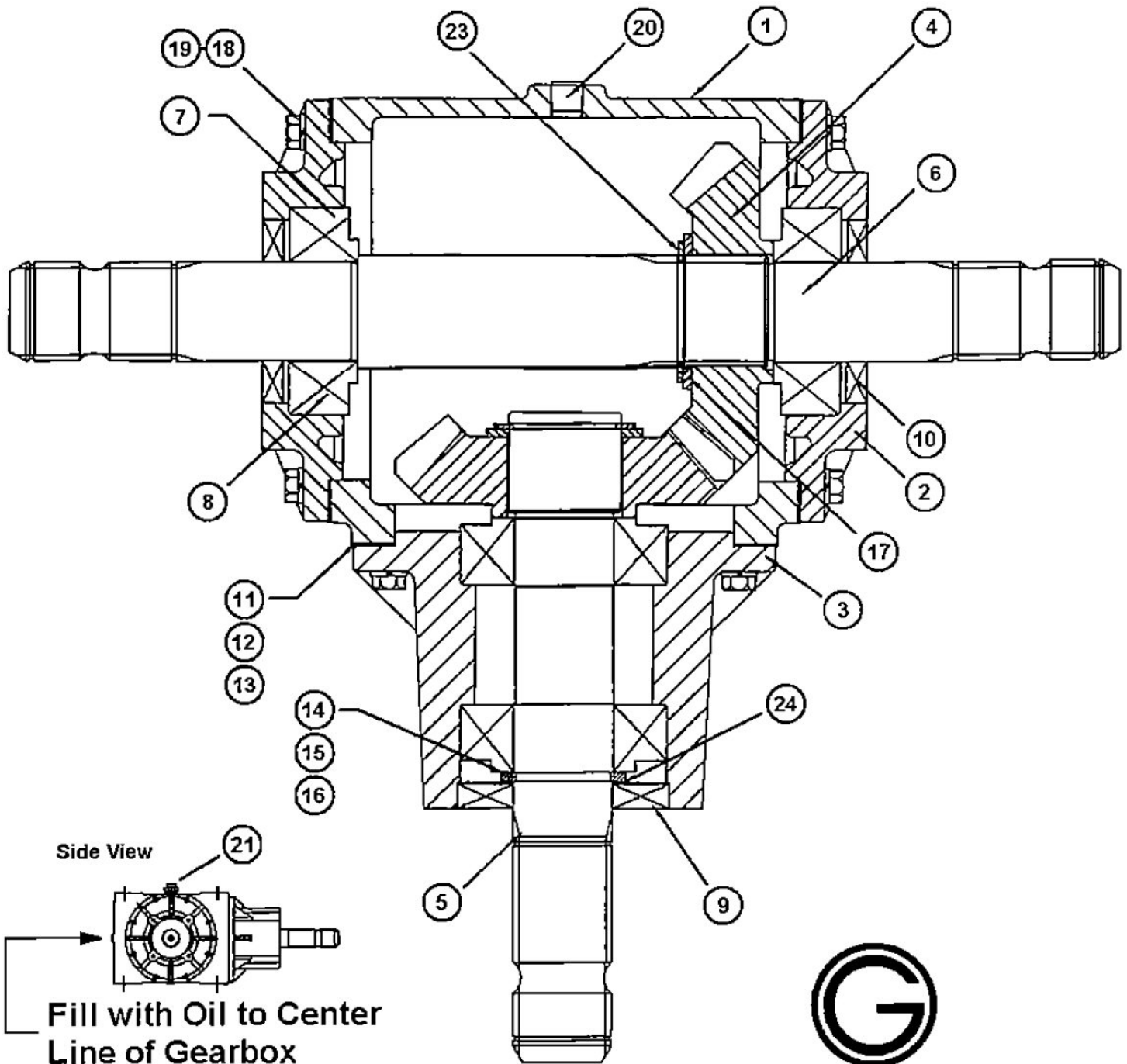


To properly identify brand of gearbox, this 1  
symbol will be on top  
of gearbox housing.  
608302 (540-RPM)  
RC 100 #251060  
Ratio 1:1.46

**608302 540-RPM****OUTBOARD GEARBOX**

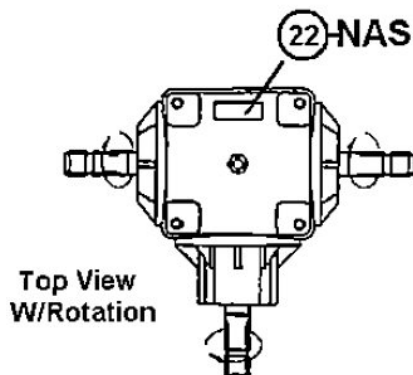
ITEM	PART #	DESCRIPTION	QTY	ITEM	PART #	DESCRIPTION	QTY
1	608320	HOUSING RC 100 SERIES	1	34	608353	EXTERNAL RETAINING RING	1
2	608321	BLANK CAP	1	35	608354	EXTERNAL RETAINING RING 85	1
3	608322	OUTPUT PINION (13-T 540 RPM)	1	36	608355	EXTERNAL RETAINING RING 90	1
	————	OUTPUT PINION (18-T 1000 RPM)	1	37	——	HUB “NOT A SERVICE PART”	—
4	608323	INPUT GEAR (19-T 540 RPM)	1	38	608357	INSPECTION COVER	1
	————	INPUT GEAR (22-T 1000 RPM)	1	39	608358	SEAAL PROTECTOR	1
5	608324	INPUT SHAFT	1				
6	608325	OUTPUT SHAFT	1				
7	W/BRG	BEARING CUP 30210	1				
8	505303	CONE BEARING 30210	1				
9	W/BRG	BEARING CUP 30209	1				
10	505974	CONE BEARING 30209	1				
11	608330	INPUT SEAL	1				
12	608331	OUTPUT SEAL	1				
13	608332	O-RING	1				
14	608317	GASKET 0.2MM	KIT				
15		GASKET 0.3MM	KIT				
16		GASKET 0.5MM	KIT				
17	608318	INPUT SHIM 0.1MM	KIT				
18		INPUT SHIM 0.2MM	KIT				
19		INPUT SHIM 0.5MM	KIT				
20	608319	OUTPUT SHIM 0.1MM	KIT				
21		OUTPUT SHIM 0.2MM	KIT				
22		OUTPUT SHIM 0.5MM	KIT				
23	608342	SPACER	1				
24	608343	SPACER	1				
25	608344	COTTER PIN	2				
26	608345	HEX CAP SCREW M8 - 1.25 X 25	8				
27	608346	HEX CAP SCREW M8 - 1.25 X 30	4				
28	608347	SLOTTED NUT 1-3/8” - 18 UNEF	1				
29	608348	SLOTTED NUT M30 X 2—6H	1				
30	608349	LOCKWASHER M8	12				
31	608350	PRESSURE RELIEF PLUG 1/2” - 14NPT	1				
32	608351	OIL SITE GAUGE A10	1				
33	————	ID TAG “NOT A SERVICE PART”	--				
<b>608302</b>		<b>COMPLETE GEARBOX</b>					

# 540-RPM T-BOX



To properly identify brand of gearbox, this symbol will be on top of gearbox housing.

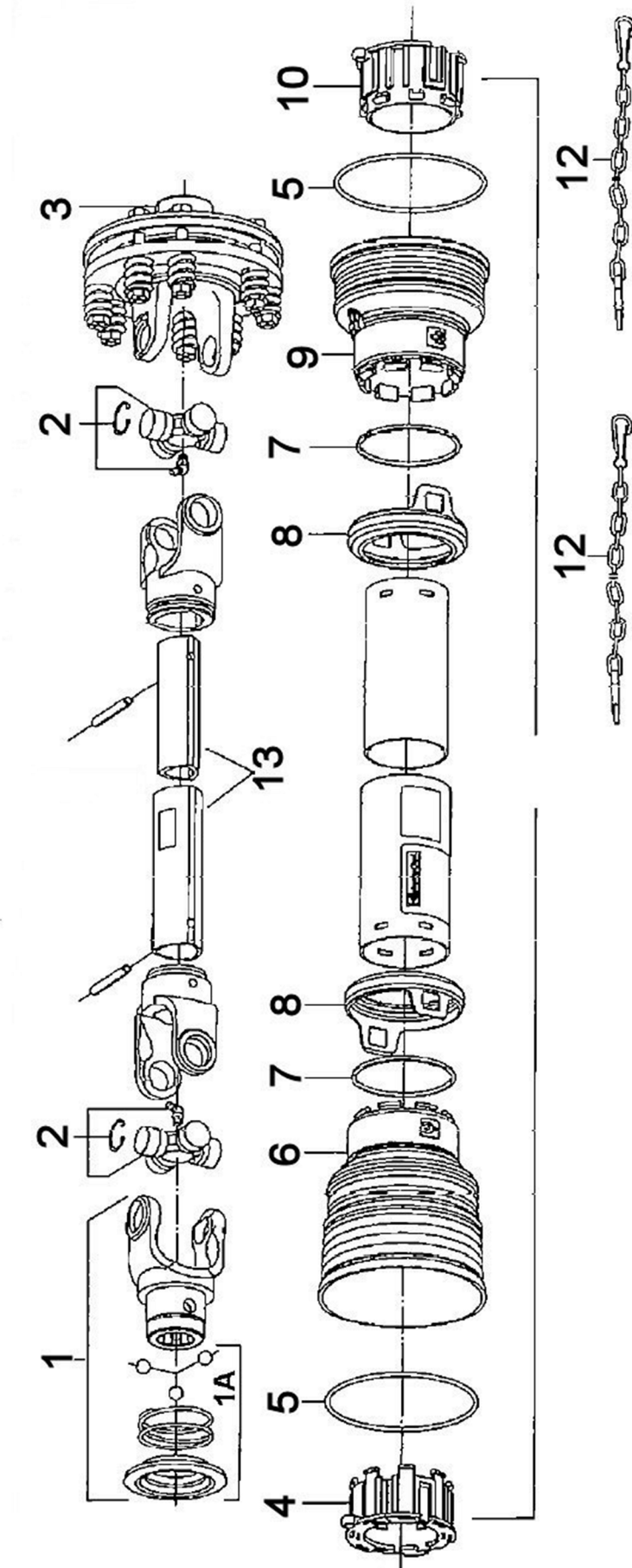
**608303 (540-RPM)**  
**LR500 #250647**  
**Ratio 1:1**



## **608303 T - GEARBOX**

ITEM	PART #	DESCRIPTION	QTY
1	608359	HOUSING 500 SERIES	1
2	608360	THRU CAP	2
3	608361	CANTILEVERED CAP	1
4	608362	GEAR 22 - T (1:1)	2
5	608363	INPUT SHAFT 1.75 - 20 SPLINE	1
6	608364	CROSS SHAFT 1.75 - 20 SPLINE	1
7	608365	BEARING CUP 33209	4
8	608366	CONE BEARING 33209	4
9	608367	INPUT SEAL	1
10	608368	CROSS SEAL	2
11	608316	GASKET 0.1MM	KIT
12		GASKET 0.2MM	KIT
13		GASKET 0.5MM	KIT
14	608315	INPUT SHIM 0.1MM	KIT
15		INPUT SHIM 0.2MM	KIT
16		INPUT SHIM 0.3MM	KIT
17	608375	GEAR SPACER (1:1)	2
18	608376	SCREW 3/8" - 16 UNC X 1-1/4"	24
19	303953	LOCKWASHER 3/8"	24
20	608377	SOCKET HEAD PLUG 1/2" - 14NPT	2
21	608350	PRESSURE RELIEF PLUG 1/2" - 14NPT	1
22	—	ID TAG "NOT A SERVICE PART"	—
23	608353	RETAINING RING 50	2
24	608378	RETAINING RING	1
<b>608303</b>		<b>COMPLETE T - GEARBOX</b>	

## 812176 LIFT TYPE DRIVELINE COMPONENTS

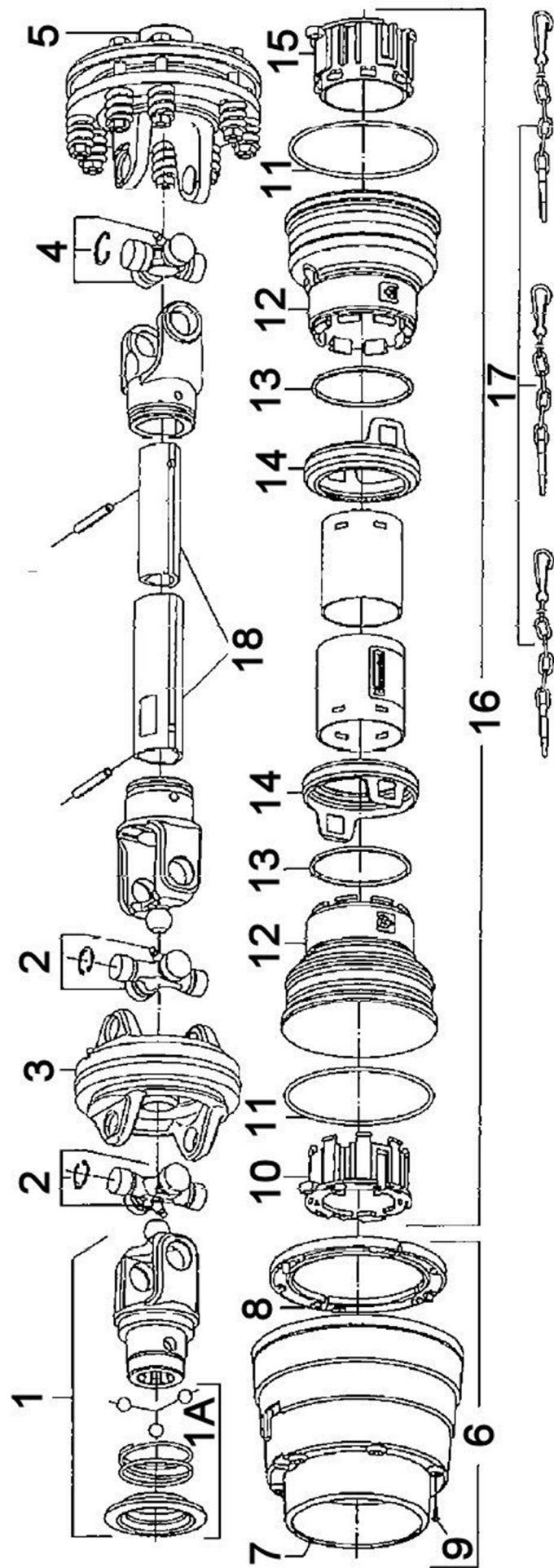




## **812176 LIFT TYPE DRIVELINE COMPONENTS**

ITEM	PART #	DESCRIPTION	QTY
1	699525	TRACTOR YOKE WITH COLLAR	1
1A	699526	PULL COLLAR KIT	1
2	699527	CROSS KIT G06	2
3	699540	CENTRALIZER CV– 80	1
4	505872	CROSS KIT 60	1
5	699504	COMPLETE SLIP CLUTCH	2
6	699591	MASTER SHIELD FRONT W/BRGS	1
7	699628	SOFT CONE	2
8	699566	BRG. SOFT CONE	2
9	699568	SELF TAPPING SCREW	1
10	699563	OUTER SHIELD BEARING	1
11	699570	STIFFENING RING	1
12	699550	SHORT CONE	2
13	699572	STOP RING	
14	699593	SAFETY SLEEVE	
15	699558	INNER SHIELD BEARING	
16	699574	COMPLETE SHIELD	
17	505103	SAFETY CHAIN	
18	699631	EXT. TUBE KIT (INCLUDES BOTH TUBES) MUST BE CUT TO LENGTH	
<b>812177</b>		<b>COMPLETE C. V. DRIVELINE W/CLUTCH</b>	

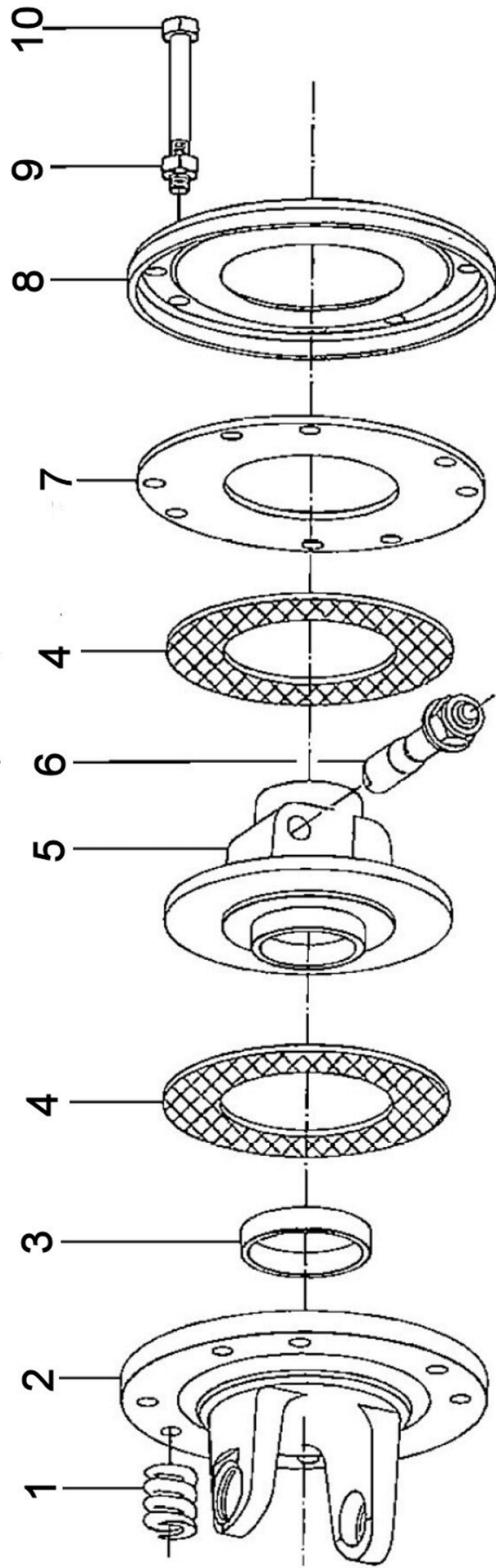
# 812177 PULL TYPE DRIVELINE COMPONENTS



## **812177 PULL TYPE DRIVELINE COMPONENTS**

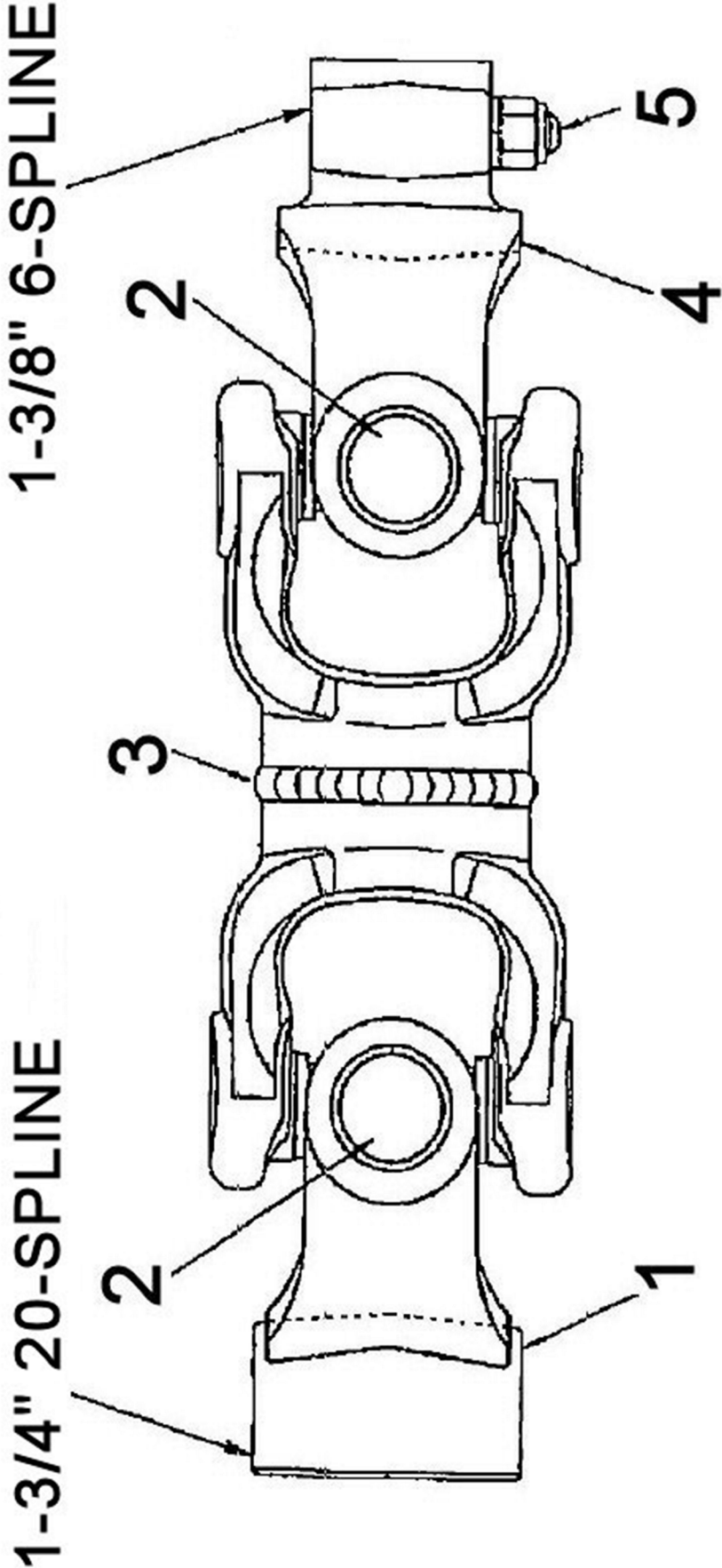
ITEM	PART #	DESCRIPTION	QTY
1	813898	YOKE ASSEMBLY	1
1A	699526	PULL COLLAR KIT	1
2	807059	CROSS KIT 60	2
3	699504	SLIPCLUTCH (COMPLETE)	1
4	699563	OUTER SHIELD BEARING	1
5	699570	STIFFENING RING	2
6	699553	OUTER CONE	1
7	699572	STOP RING	2
8	699593	SAFETY SLEEVE	2
9	699550	INNER CONE	1
10	699558	INNER SHIELD BEARING	1
11	699580	COMPLETE SHIELD	1
12	505103	SAFETY CHAIN	2
13	699631	EXT. TUBE KIT (INCLUDES BOTH TUBES) MUST BE CUT TO LENGTH	1
<b>812176</b>		<b>COMPLETE DRIVELINE W/CLUTCH</b>	

699504 SLIP CLUTCH COMPONENTS



ITEM	PART #	DESCRIPTION	QTY
1	699518	SPRING	8
2	699509	FLANGED YOKE	1
3	699592	SLEEVE	1
4	699520	LINING	2
5	699512	HUB W/FLANGE	1
6	699529	BOLT W/NUT & WASHER	2
7	699514	INNER PLATE	1
8	699516	PRESSURE PLATE	1
9	699537	M10 HEX NUT	8
10	699534	HEX HEAD BOLT M10 X 90	8
	<b>699504</b>	<b>COMPLETE SLIP CLUTCH</b>	

# 811360 CONNECTOR SHAFT



ITEM	PART #	DESCRIPTION	QTY
1	812457	YOKE 1-3/4" 20 - SPLINE	1
2	812458	CROSS KIT 60	2
3	812459	DOUBLE YOKE	NAS
4	809983	YOKE 1-3/8" 6 -SPLINE	1
5	699530	CONICAL BOLT KIT	1
	811360	COMPLETE CONNECTOR SHAFT	



## **TO THE DEALER:**

The rotary cutter assembly and proper installation to the tractor is the responsibility of the TAYLOR PITTSBURGH dealer. Read manual instructions and safety rules. Make sure all items on the Pre-delivery and Delivery Checklists are completed before releasing equipment to the owner.

## **TO THE OWNER:**

Read this manual before operating your TAYLOR PITTSBURGH rotary cutter. The information presented will prepare you to do a better and safer job. Keep this manual handy for ready reference. Require all operators to read this manual carefully and become acquainted with all the adjustment and operating procedures before attempting to operate. Replacement manuals can be obtained from your dealer or by calling 1-205-487-3202, in the USA and Canada only.

The rotary cutter you have purchased has been carefully engineered and manufactured to provide dependable and satisfactory use. Like all mechanical products, it will require cleaning and upkeep. Lubricate the unit as specified. Observe all safety information in this manual and safety decals on the rotary cutter and tractor.

For service your authorized TAYLOR PITTSBURGH dealer has trained mechanics, genuine TAYLOR PITTSBURGH service parts, and the necessary tools and equipment to handle all your needs.

Provide your model number and serial number to your dealer to obtain correct repair parts.

## **LIMITED WARRANTY**

TAYLOR PITTSBURGH MFG., INC. the manufacturer, warrants only to the Original Purchaser that this equipment, under normal use and service, will be free from defects in material and workmanship for one (1) year from date of purchase providing this equipment is purchased for individual and not for commercial use. Warranty for commercial usage is 90 days. This warranty does not apply to any equipment which has been damaged or which has been subjected to abuse, misuse, negligence, abnormal wear and tear, alterations, tampering, or failure to follow operating instructions. This warranty does not cover any product or parts not manufactured by TAYLOR PITTSBURGH MFG., Inc.

Under this warranty, the manufacturer will repair or replace any part which the manufacturer determines has failed during the period of the warranty due to defects in material or workmanship. After approval by the manufacturer, the equipment or defective part must be returned to TAYLOR PITTSBURGH MFG., INC., Winfield, AL 35594.

Warranty coverage and performance is expressly conditioned on the return of the completed registration form to TAYLOR PITTSBURGH, INC., Winfield, AL 35594.

PURCHASER'S EXCLUSIVE REMEDY FOR BREACH OF WARRANTY, OTHER DEFECT, OR CONDUCT GIVING RISE TO LIABILITY SHALL BE THE REPAIR OR REPLACEMENT OF THE PRODUCT SOLD, AND THE MANUFACTURER UNDER NO CIRCUMSTANCES SHALL BE LIABLE FOR ECONOMIC LOSS OR INCIDENTAL OR CONSEQUENTIAL DAMAGES. THE MANUFACTURER DISCLAIMS ALL IMPLIED WARRANTIES, INCLUDING THE WARRANTY OF MERCHANTABILITY AND FITNESS FOR PURPOSE.

Taylor Pittsburgh Mfg., Inc. reserves the right to make improvements and changes in specifications without notice or obligation to modify previous sold units.

This manual describes the proper assembly procedures for your rotary cutter and furnishes operating and maintenance recommendations to help you obtain long and satisfactory service.

## **TAYLOR PITTSBURGH MFG.**

### **FIVE YEAR LIMITED GEARBOX WARRANTY**

Taylor Pittsburgh Mfg., warrants to the original purchaser of any new Taylor Pittsburgh product equipped with a Gearbox, a Gearbox only- limited Five (5) year warranty, for non-commercial, non-state, non-municipalities, and non-rental use, and for 90 days for commercial, non-rental use or a 30-day warranty is offered for rental use.

Under no circumstances will this warranty apply in the event that the product, in good faith opinion of Taylor Pittsburgh, has been subjected to improper operation, improper maintenance, misuse, fire or an accident. This warranty does not apply in the event that the product has been materially modified or repaired by someone not authorized prior to repair by Taylor Pittsburgh. This warranty does not cover normal wear and tear, or normal maintenance items. This warranty also does not cover repairs made with parts other than those obtainable through Taylor Pittsburgh.

This warranty is extended solely to the original purchaser of the product. Should the original purchaser sell or otherwise transfer this product to a third party, this Warranty does not transfer to the third-party purchaser in any way. There are no third-party beneficiaries of this Warranty.

Taylor Pittsburgh's obligation under this Warranty are limited to, at Taylor Pittsburgh's option, the repair or replacement of the product if Taylor Pittsburgh in its sole discretion deems it to be defective or in noncompliance with this Warranty. The product must be returned to Taylor Pittsburgh with proof of purchase within thirty (30) days after such defect or noncompliance is discovered or should have been discovered, routed thru the dealer and distributor from whom the purchase was made, transportation charges prepaid.

**THERE ARE NO OTHER REMEDIES UNDER THIS WARRANTY. THE REMEDY OF REPAIR OR REPLACEMENT IS THE SOLE AND EXCLUSIVE REMEDY UNDER THIS WARRANTY.**

**THERE ARE NO WARRANTIES, WHICH EXTEND BEYOND THE DESCRIPTION ON THE FACE OF THIS WARRANTY. TAYLOR PITTSBURGH MAKES NO OTHER WARRANTY, EXPRESS OR IMPLIED, AND TAYLOR PITTSBURGH SPECIFICALLY DISCLAIMS ANY IMPLIED WARRANTY OR MERCHANTABILITY AND/OR ANY IMPLIED WARRANTY OF FITNESS FOR A PARTICULAR PURPOSE.**

Taylor Pittsburgh shall not be liable for any incidental or consequential losses, damages or expenses, arising directly or indirectly from the product, whether such claim is based upon breach of contract, breach of warranty, negligence, strict liability in tort or any other legal theory. Without limiting the generality of foregoing, Taylor Pittsburgh specifically disclaims any damages relating to lost profits, business revenues or good will, loss of crops, loss of delay in harvesting; any expense or loss incurred for labor, supplies, substitute machinery or rental; or any other type of damage to property or economic loss.

Any and ALL repairs must be pre-approved by Taylor Pittsburgh prior to any repairs being made and subject to all conditions, restrictions, and purchaser obligations as stated within this Warranty.

(continued on next page)

(continued from previous page)

Five (5) Year Limited Gearbox Warranty is a variable warranty based on purchase date, within one year from original purchase date, to the original owner. Warranty would include parts and labor based on all restrictions and limits stated above. Taylor Pittsburgh reserves the right to limit labor in hours and hourly charges. All repairs must be pre-approved prior to work being done. Years 2 thru 5 are parts only warranty. NO LABOR WILL BE PAID. Taylor Pittsburgh reserves the right to ask and inspect all parts prior to a warranty decision being made. Incidental expenses such as lubricants and transportation to and from the dealer are not covered by warranty.

It is the original purchaser's burden and obligation to maintain proof of purchase, a copy of which must accompany any and all warranty claims.

No agent, representative, dealer, distributor, serviceperson, salesperson, or employee of any company, including without limitation, Taylor Pittsburgh, its authorized dealers, distributors, and service centers, is authorized to alter, modify or enlarge this Warranty.

This Warranty is effective on any Taylor Pittsburgh product purchased January 1, 2008 and after and is subject to change without notice.

Answers to any questions regarding warranty service may be obtained by contacting:

Taylor Pittsburgh Mfg.

305 Commerce Drive

Winfield, AL 35594

1-800-228-2308 (tel)

1-205-487-0227 (fax)

Taylor Pittsburgh Manufacturing Inc., Winfield, AL, is a manufacturer of quality agricultural and rural lifestyle equipment, and is a division of King Kutter Inc. Taylor Pittsburgh Manufacturing Inc. offers a full line of three-point mounted and pull type implements including rotary cutter, rotary tillers, estate groomers, landscape equipment, and specialty equipment. For more information please contact Taylor Pittsburgh Manufacturing Inc.